

Because life is

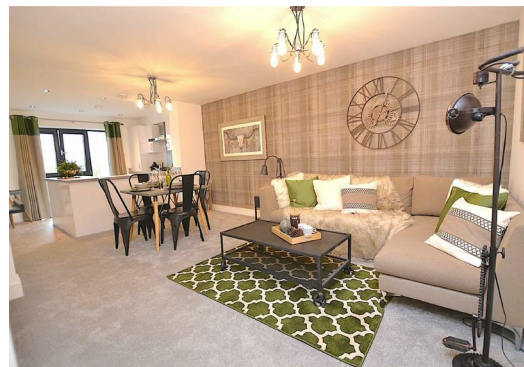
Petty Real™

For Sale



Plot 2 Bridgewalk
Apartments
Sandygate
Burnley BB11 1TF

£94,950



Key Features:

Tenure: Leasehold
EPC Rating: G
Council Tax Band:



2 BEDROOM Apartment

Main Description:

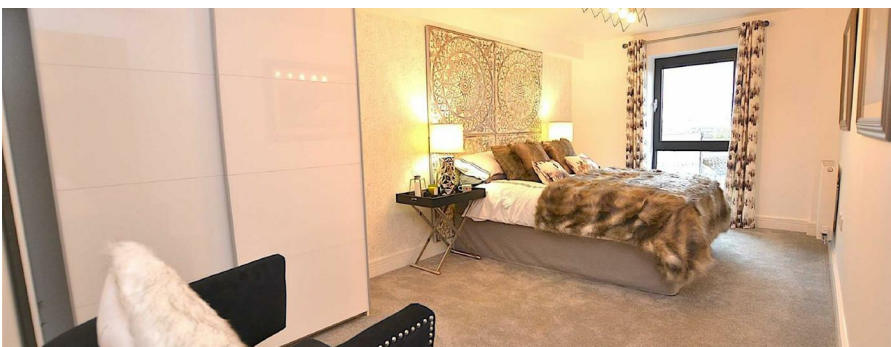
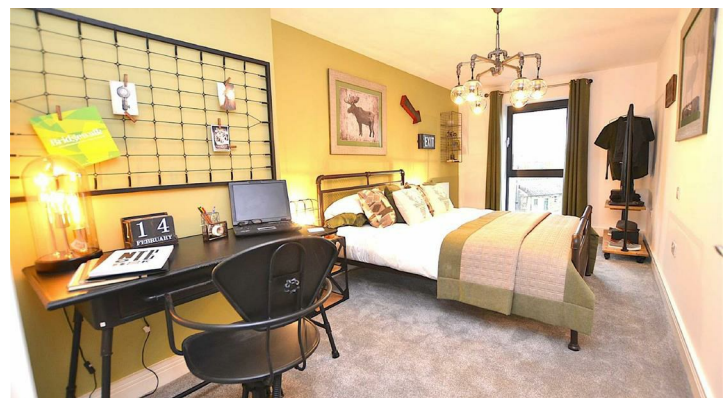
Bridgewalk Apartments is an iconic development in the heart of Burnley's Victorian Industrial Quarter, forming part of the 'On The Banks Development' adjacent to the Leeds & Liverpool canal. Providing close proximity to shops, coffee shops, restaurants and the University of Central Lancashire. Local and national transport links include the M65 motorway and Burnley train station with links to Manchester City Centre in just over 1 hour.

Start afresh or escape your parents in a safe, city centre feel apartment.

One less life decision to make - we've already installed high specification kitchens and bathrooms for you!

Piece of mind with a 10 year Premier Guarantee.

Please note the photos shown are of Plot 6.



IMPORTANT: We would like to inform prospective purchasers that these sales particulars have been prepared as a general guide only. A detailed survey has not been carried out, nor the services, appliances and fittings tested. Room sizes should not be relied upon for furnishing purposes and are approximate. If floor plans are included, they are for guidance only and illustration purposes only and may not be to scale. If there are any important matters likely to affect your decision to buy, please contact us before viewing the property