

Because life is

PettyTM
Real

39 Accrington Road
Burnley
BB11 4AN



For Sale

£74,950

- Mid-Terrace
- Three Bedrooms
- Two Reception Rooms
- Cellar
- Close To Transport Links

- Train Station Close By
- Perfect For FTB & Investors
- Three-Piece Bathroom Suite
- Garden Forecourt
- Stone-Built

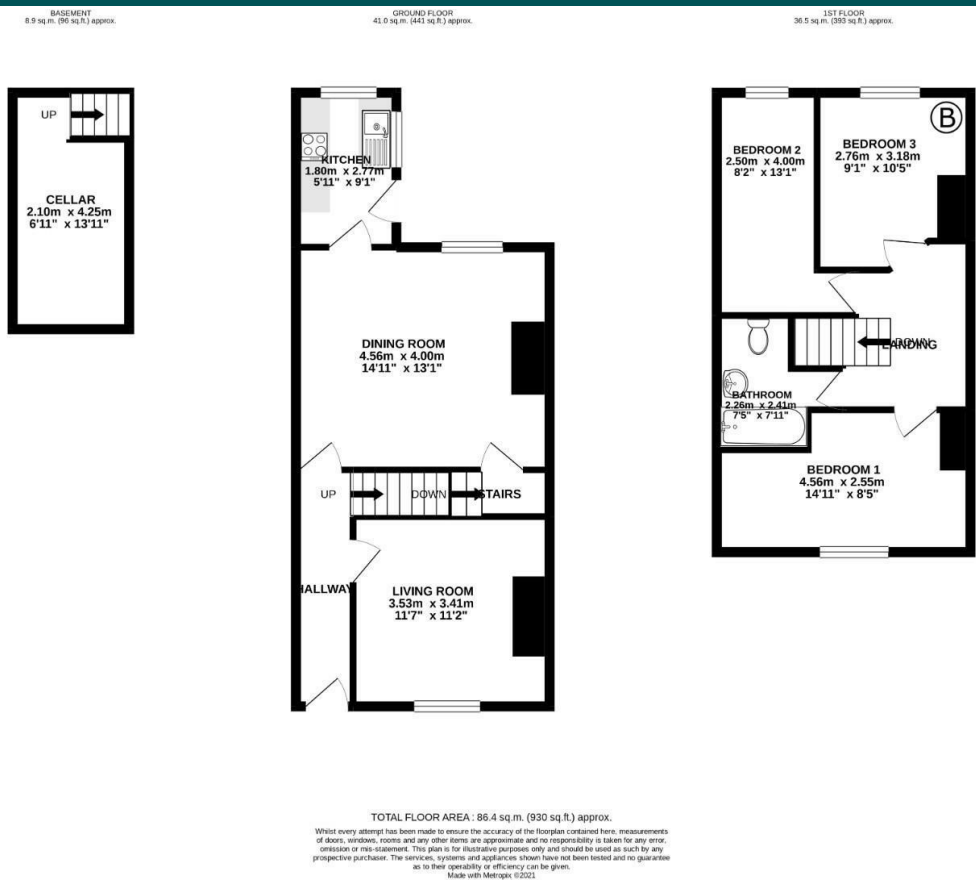


Three bedroom stone-built mid-terrace in an elevated position situated close to local amenities, schools, bus stops, train stations, and a short walk into Burnley Town Centre.

On the ground floor, the property briefly comprises an entrance hallway, front living room, rear dining room, kitchen fitted with matching wall, base, and drawer units with contrasting working surfaces. Access to the cellar can be accessed through the rear dining room.

On the first floor, there is a double bedroom to the front and two singles to the rear. The central bathroom comprises a low-level WC, a pedestal hand wash basin, and a paneled bath with an overhead electric shower.

Externally there is a garden forecourt to the front and a private enclosed rear yard



These particulars, whilst believed to be accurate are set out as a general outline only for guidance and do not constitute any part of an offer or contract. Intending purchasers should not rely on them as statements of representation of fact, but must satisfy themselves by inspection or otherwise as to their accuracy. No person in this firm's employment has the authority to make or give any representation or warranty in respect of the property.

26 Manchester Road, Burnley, Lancashire, BB11 1HH
T.
Burnley.sales@pettyreal.co.uk burnley.lettings@pettyreal.co.uk
property.management@pettyreal.co.uk

www.pettyreal.co.uk