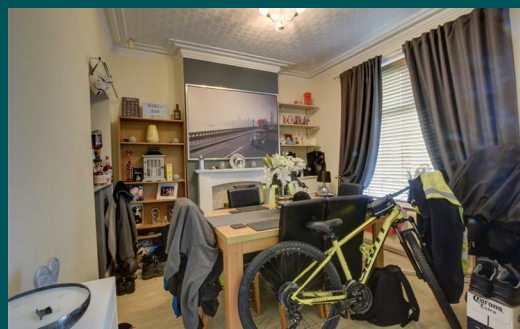


Because life is

Petty
Real™

21 Plover Street
Burnley
Lancashire
BB12 0HE



For Sale

£85,000

- Stone-Built Mid-Terrace
- Three Bedrooms
- Two Reception Rooms
- uPVC Double Glazing
- Enclosed Rear Yard

- Three-Piece Bathroom Suite
- Close To Transport Links
- Perfect For Investors or FTB
- Schools Nearby
- VIEWING IS A MUST!



ATTENTION INVESTORS! TENANT IN SITU!

Stone-built, a mid-terraced house situated in an established residential area of Burnley off Padiham Road so close to all local amenities and transport links to Manchester, Leeds & Preston.

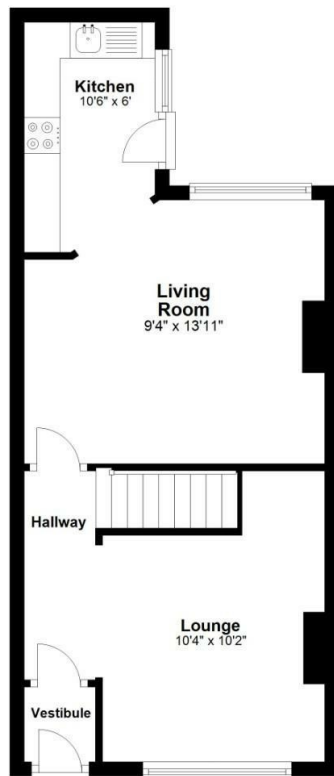
The property briefly comprises on the ground floor entrance hall, living room, dining room with open plan kitchen with matching wall, base and drawer units with a range of appliances such as a gas hob and electric oven.

On the first floor, there is a double bedroom and two generous-sized single bedrooms, and a three-piece bathroom suite comprising a low-level WC, hand wash basin, and a bath with an overhead shower.

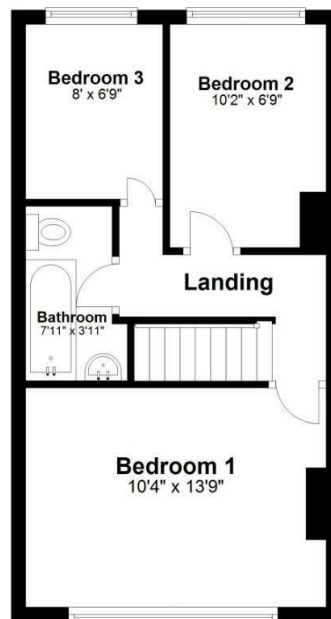
Externally, there is an enclosed rear yard with a shed which is plumbed for a washing machine. The property is a must to view internally as it is immaculate throughout and the first to view will take.

The property benefits from modern-day comforts such as gas central heating and UPVC double glazing.

Ground Floor



First Floor



These particulars, whilst believed to be accurate are set out as a general outline only for guidance and do not constitute any part of an offer or contract. Intending purchasers should not rely on them as statements of representation of fact, but must satisfy themselves by inspection or otherwise as to their accuracy. No person in this firm's employment has the authority to make or give any representation or warranty in respect of the property.

26 Manchester Road, Burnley, Lancashire, BB11 1HH

T.

Burnley.sales@pettyreal.co.uk burnley.lettings@pettyreal.co.uk
property.management@pettyreal.co.uk

www.pettyreal.co.uk