

Because life is

Petty  
Real™

For  
Sale



Barden Marina Barden  
Lane  
Burnley BB10 1JA

£140,000

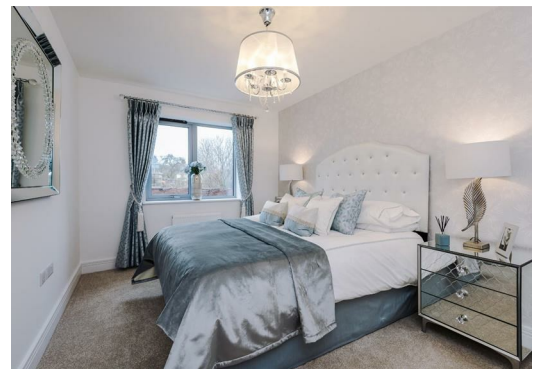


Barden  
Marina  
BURNLEY

Backed by  
HM Government

**ASK US ABOUT THE GOVERNMENT SCHEME  
AVAILABLE ON THIS DEVELOPMENT**

[www.helptobuy.gov.uk/equity-loan/equity-loans/](http://www.helptobuy.gov.uk/equity-loan/equity-loans/)



## Key Features:

- Flush American white oak interior doors
- Integrated appliances
- Floor coverings to lounge/bedrooms/hallway
- Close to Fence, Barrowford & Higham
- Energy saving cavity walls & roof insulation
- 10 Year Premier Guarantee
- Overlooking the Leeds Liverpool canal
- Grey PVC Double Glazed Windows
- Stunning views
- Close to Burnley town centre

Tenure: Leasehold

EPC Rating:

Council Tax Band:



26 Manchester Road, Burnley, Lancashire, BB11 1HH  
T:



[www.pettyreal.co.uk](http://www.pettyreal.co.uk)

## 2 BEDROOM Apartment



### Main Description:

**\*\*75% NOW RESERVED!\*\***

Don't miss out on this fantastic development, contact us to book your viewing today on 01282 442304.

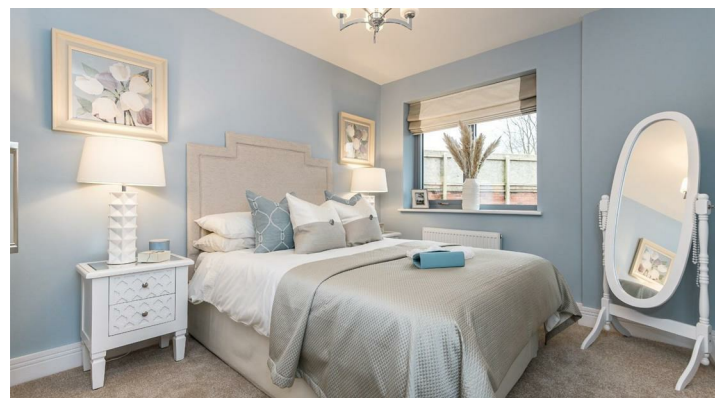
**\*\* MARKETING SUITE OPEN SATURDAY, SUNDAY & BANK HOLIDAYS- 11AM TILL 4PM \*\***

Barden Marina, Burnley is a select development of just 19 homes and 16 apartments spaciouly and stylishly designed to a high specification, perfectly located on the outskirts of Burnley, neighboring Barden Marina. The development offers a cluster of 2 bedroom apartments, spacious 3 bedroom homes, and 4 bedroom townhouses overlooking the Leeds & Liverpool canal complete with stunning countryside views.

We are pleased to announce that the show home apartment will be launching at the beginning of March 2021. The sales suite is currently open every weekend and bank holidays from 11 am until 4 pm. Almost 50% of the 3 & 4 bedroomed homes have now been sold so don't delay, simply contact a member of the Petty Real or Barnfield Homes Sales teams to find out more information.

Barden Marina, Burnley is a select development of just 19 homes and 16 apartments spaciouly and stylishly designed to a high specification, perfectly located on the outskirts of Burnley, neighbouring Barden Marina. The development offers a cluster of 2 bedroom apartments, spacious 3 bedroom homes and 4 bedroom townhouses overlooking the Leeds & Liverpool canal complete with stunning countryside views.

We are pleased to announce that the show home apartment will be launching at the beginning of March 2021. The sales suite is currently open every weekend and bank holidays 11am until 4pm. Almost 50% of the 3 & 4 bedroomed homes have now been sold so don't delay, simply contact a member of the Petty Real or Barnfield Homes Sales teams to find out more information.



**IMPORTANT:** We would like to inform prospective purchasers that these sales particulars have been prepared as a general guide only. A detailed survey has not been carried out, nor the services, appliances and fittings tested. Room sizes should not be relied upon for furnishing purposes and are approximate. If floor plans are included, they are for guidance only and illustration purposes only and may not be to scale. If there are any important matters likely to affect your decision to buy, please contact us before viewing the property