

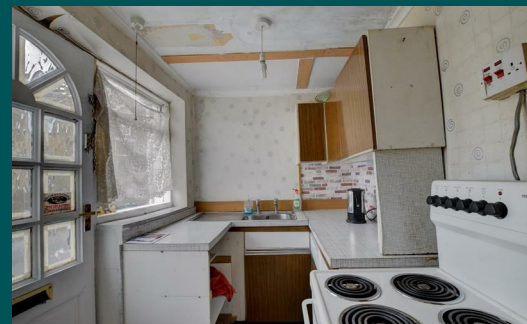
Because life is

Petty  
Real™

11a Skipton Road  
Colne  
BB8 0NQ



- For Sale by Auction – T & C's apply
- Subject to an undisclosed Reserve Price
- Reservation Fee applicable
- The Modern Method of Auction



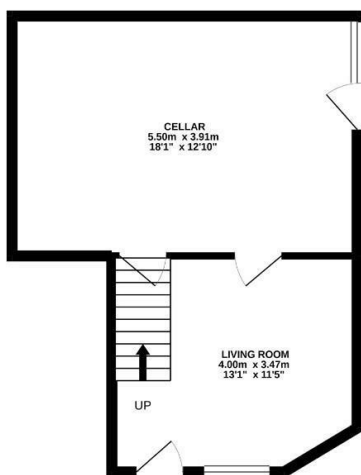
For Sale  
Auction Guide £30,000



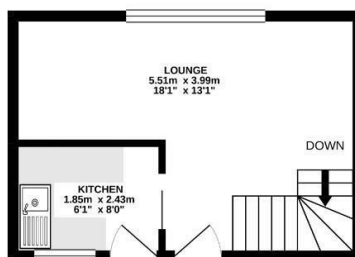
For Sale by Modern Method of Auction; Starting Bid Price £30,000 plus Reservation Fee.

This property is for sale by the Modern Method of Auction. Should you view, offer or bid on the property, your information will be shared with the Auctioneer, iarnsold Limited.

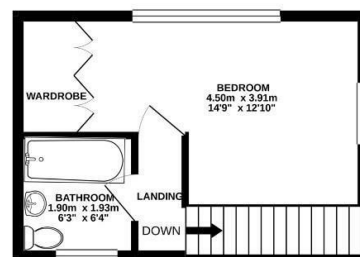
GROUND FLOOR  
35.6 sq.m. (384 sq.ft.) approx.



1ST FLOOR  
22.0 sq.m. (237 sq.ft.) approx.



2ND FLOOR  
22.0 sq.m. (237 sq.ft.) approx.



TOTAL FLOOR AREA : 79.6 sq.m. (857 sq.ft.) approx.

Whilst every attempt has been made to ensure the accuracy of the floorplan contained here, measurements of doors, windows, rooms and any other items are approximate and no responsibility is taken for any error, omission or mis-statement. This plan is for illustrative purposes only and should be used as such by any prospective purchaser. The services, systems and appliances shown have not been tested and no guarantee as to their operability or efficiency can be given.  
Made with Metropix ©2021.



These particulars, whilst believed to be accurate are set out as a general outline only for guidance and do not constitute any part of an offer or contract. Intending purchasers should not rely on them as statements of representation of fact, but must satisfy themselves by inspection or otherwise as to their accuracy. No person in this firm's employment has the authority to make or give any representation or warranty in respect of the property.

11 Albert Road, Colne, Lancashire, BB8 0RY  
T. 01282 868686  
Colne.sales@pettyreal.co.uk

[www.pettyreal.co.uk](http://www.pettyreal.co.uk)