

Because life is

PettyTM
Real

1 Robinson Street
Colne
BB8 9PU



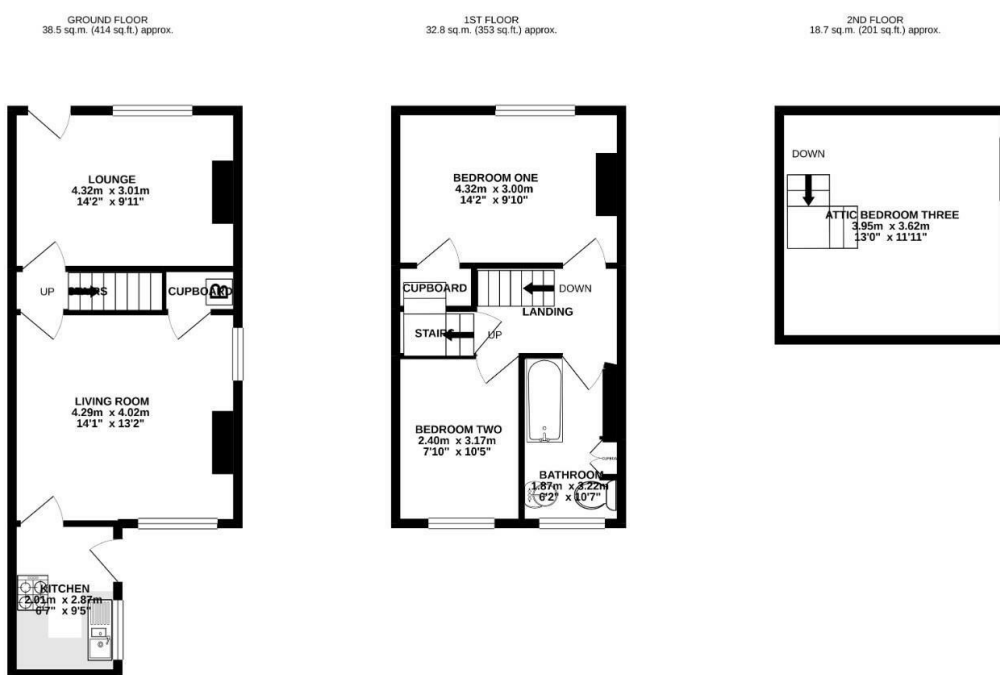
For Sale
£115,000

A spacious garden fronted gable end terrace situated in a popular residential area a short distance away from the Alkincoats district of Colne and Alkincoats Park which has been awarded Green Flag Status. The property has recently benefited from re-decoration and carpeting throughout providing a blank canvas for any would be purchaser. The spacious accommodation is arranged over three floors and comprises on the ground floor, two good sized reception rooms and separate modern fitted kitchen. To the first floor are two bedrooms and a three piece bathroom suite in white and to the second floor is a useful attic third bedroom. The property benefits from the modern day comforts of UPVC double glazing and gas fired central heating and the property would ideally suit first time buyers or growing families.

The property is currently tenanted on an assured shorthold tenancy at a rental of £500 per calendar month.

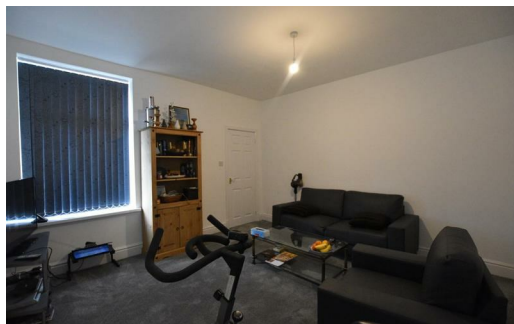


Spacious 3 bedroom garden fronted gable end terrace ideal for FTB or growing families, located close to Alkincoats Park.



TOTAL FLOOR AREA: 90.0 sq.m. (969 sq.ft.) approx.

Whilst every attempt has been made to ensure the accuracy of the floorplan contained here, measurements of doors, windows, rooms and any other items are approximate and no responsibility is taken for any error, omission or mis-statement. This plan is for illustrative purposes only and should be used as such by any prospective purchaser. The services, systems and appliances shown have not been tested and no guarantee as to their operability or efficiency can be given.
Made with Metropix ©2021



These particulars, whilst believed to be accurate are set out as a general outline only for guidance and do not constitute any part of an offer or contract. Intending purchasers should not rely on them as statements of representation of fact, but must satisfy themselves by inspection or otherwise as to their accuracy. No person in this firm's employment has the authority to make or give any representation or warranty in respect of the property.

11 Albert Road, Colne, Lancashire, BB8 0RY
T. 01282 868686
Colne.sales@pettyreal.co.uk

www.pettyreal.co.uk