

Because life is

Petty
Real™

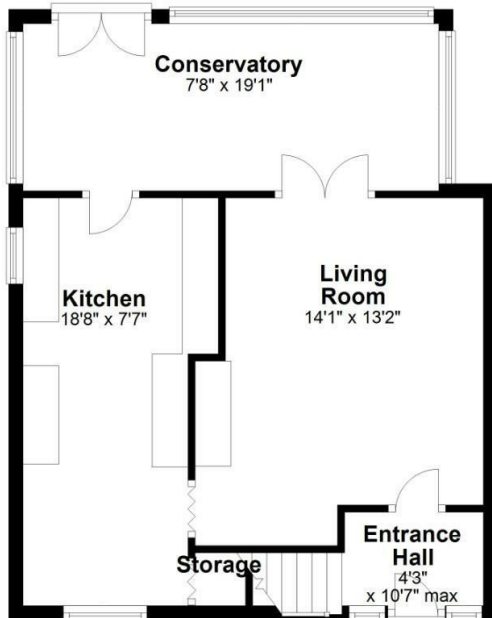
112 Hallam Road
Nelson
BB9 8DJ



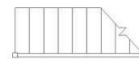
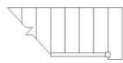
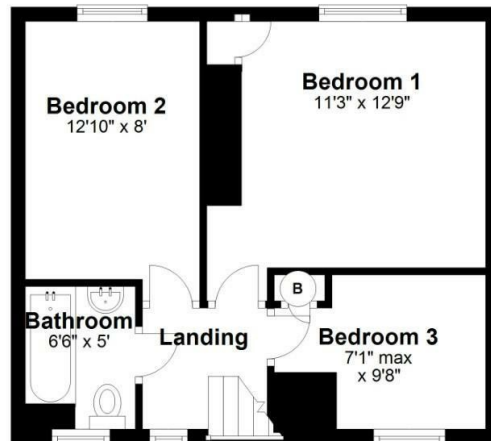
For Sale
Price £149,950

3 1 1 E

Ground Floor
Approx. 546.2 sq. feet



First Floor
Approx. 393.6 sq. feet



Total area: approx. 939.9 sq. feet



These particulars, whilst believed to be accurate are set out as a general outline only for guidance and do not constitute any part of an offer or contract. Intending purchasers should not rely on them as statements of representation of fact, but must satisfy themselves by inspection or otherwise as to their accuracy. No person in this firm's employment has the authority to make or give any representation or warranty in respect of the property.

11 Albert Road, Colne, Lancashire, BB8 0RY
T. 01282 868686
Colne.sales@pettyreal.co.uk

www.pettyreal.co.uk