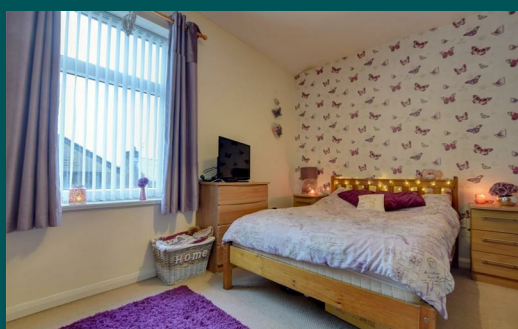


Because life is

PettyTM
Real

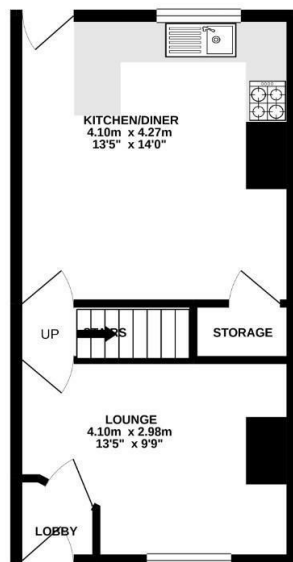
115 Bolton Grove
Barrowford
BB9 8PB



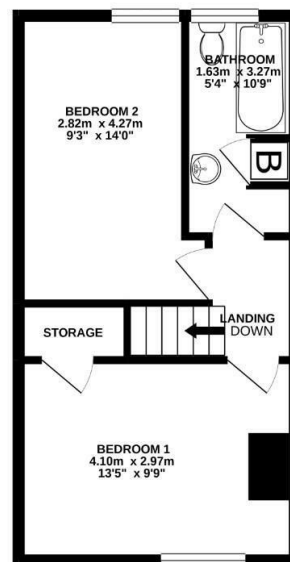
For Sale
£115,000



GROUND FLOOR
31.9 sq.m. (343 sq.ft.) approx.



1ST FLOOR
32.5 sq.m. (350 sq.ft.) approx.



TOTAL FLOOR AREA - 64.4 sq.m. (693 sq.ft.) approx.

Whilst every attempt has been made to ensure the accuracy of the floorplan contained herein, measurements of doors, windows, rooms and any other items are approximate and no responsibility is taken for any error, omission or mis-statement. This plan is for illustrative purposes only and should be used as such by any prospective purchaser. The services, systems and appliances shown have not been tested and no guarantee as to their operability or efficiency can be given.
Made with Maptopia ©2021



These particulars, whilst believed to be accurate are set out as a general outline only for guidance and do not constitute any part of an offer or contract. Intending purchasers should not rely on them as statements of representation of fact, but must satisfy themselves by inspection or otherwise as to their accuracy. No person in this firm's employment has the authority to make or give any representation or warranty in respect of the property.

134 Gisburn Road, Barrowford, Lancashire, BB9 6HQ
T. 01282 615900
Barrowford.sales@pettyreal.co.uk

www.pettyreal.co.uk