

Because life is

PettyTM
Real

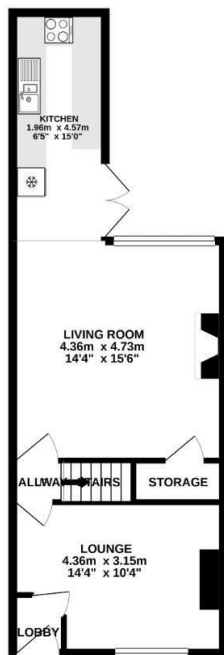
13 Lucy Street
Barrowford
BB9 8QS



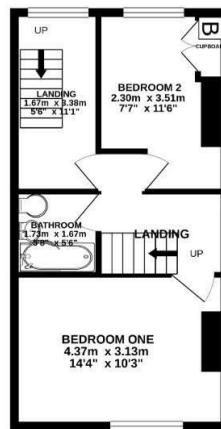
For Sale
£129,950



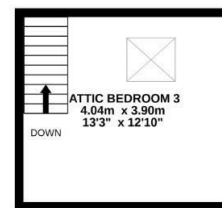
GROUND FLOOR
44.9 sq.m. (483 sq.ft.) approx.



1ST FLOOR
36.1 sq.m. (389 sq.ft.) approx.



2ND FLOOR
17.5 sq.m. (188 sq.ft.) approx.



TOTAL FLOOR AREA: 98.5 sq.m. (1060 sq.ft.) approx.

Whilst every attempt has been made to ensure the accuracy of the floorplan contained herein, measurements of doors, windows, rooms and any other items are approximate and no responsibility is taken for any error, omission or mis-statement. This plan is for illustrative purposes only and should be used or acted by any prospective purchaser. The services, systems and appliances shown have not been tested and no guarantee as to their operability or efficiency can be given.
Made with Metropix ©2021.



These particulars, whilst believed to be accurate are set out as a general outline only for guidance and do not constitute any part of an offer or contract. Intending purchasers should not rely on them as statements of representation of fact, but must satisfy themselves by inspection or otherwise as to their accuracy. No person in this firm's employment has the authority to make or give any representation or warranty in respect of the property.

134 Gisburn Road, Barrowford, Lancashire, BB9 6HQ
T. 01282 615900
Barrowford.sales@pettyreal.co.uk

www.pettyreal.co.uk