

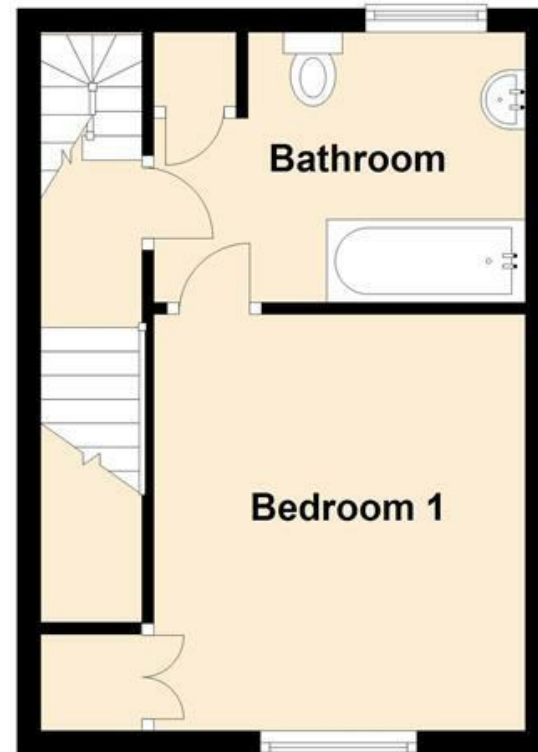


Wright Marshall
Estate Agents

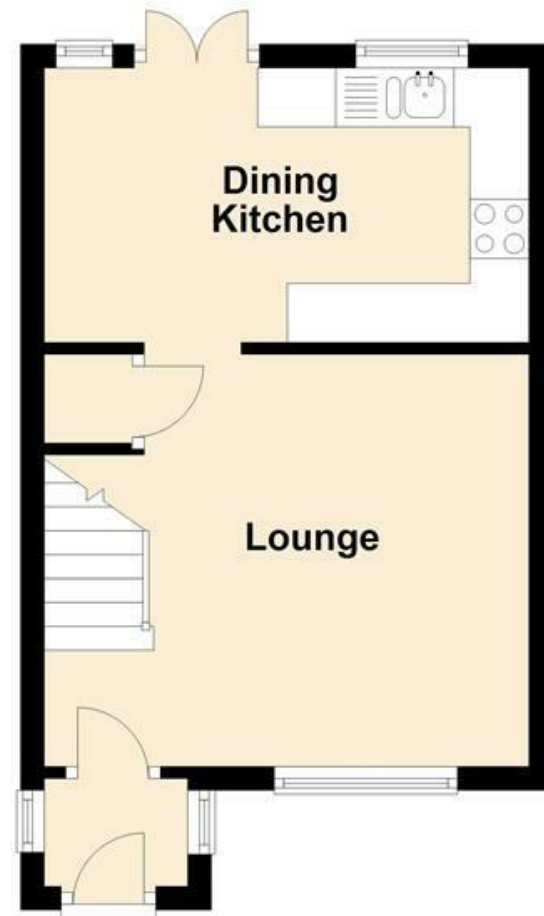
3 ST JAMES STREET, BUXTON SK17 6HR

£139,500

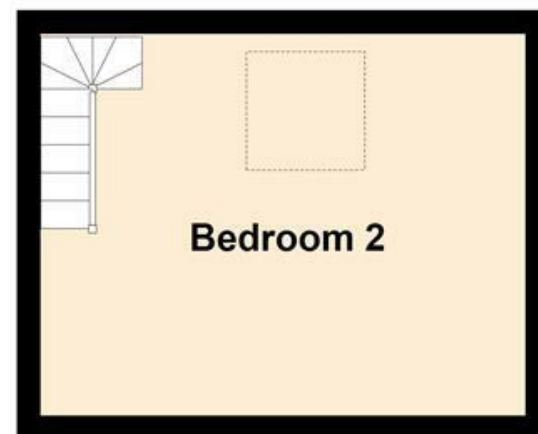
First Floor



Ground Floor



Second Floor



A very well presented stone built mid terraced property SITUATED WITHIN WALKING DISTANCE OF PAVILION GARDENS. Comprising; entrance porch, lounge, re-fitted dining kitchen, TWO DOUBLE BEDROOMS and spacious bathroom. Externally there is walled frontage and a rear yard.

MISREPRESENTATION ACT 1967.

Messrs Wright Marshall for themselves and for the vendors or Lessors of this property, whose agents they are, give notice that:

1. The particulars are set out as general outline only for the guidance of intending purchasers, and do not constitute, nor constitute part of, an offer or contract.
2. All descriptions and references to condition and necessary permissions for use and occupation, and other details are given in good faith and are believed to be correct but any intending purchasers or tenants should not rely on them as statements or representations of fact but must satisfy themselves by inspection or otherwise as to the correctness of each of them.
3. No person in the employment of Messrs. Wright Marshall has any authority to make any representation whatever in relation to this property.



rightmove

8 The Quadrant, Buxton, Derbyshire, SK17 6AW
T. 01298 23038 | www.wrightmarshall.co.uk

Buxton | Chester | Crewe | Knutsford | Nantwich | Northwich | Tarporley

A very well presented stone built mid terraced property SITUATED WITHIN WALKING DISTANCE OF PAVILION GARDENS. Comprising; entrance porch, lounge, re-fitted dining kitchen, TWO DOUBLE BEDROOMS and spacious bathroom. Externally there is walled frontage and a rear yard.

ENTRANCE PORCH

Entrance door, two double glazed windows, wood effect flooring, cloaks hanging space.

LOUNGE

13'10 x 11'5 (4.22m x 3.48m)
Double glazed window, fireplace with wooden surround and living flame gas fire, under stairs cupboard, wood effect flooring, radiator, stairs to first floor.



RE-FITTED DINING KITCHEN

13'10 x 7'6 (4.22m x 2.29m)
Fitted with wall and base mounted units with work surfaces over and tiled splash backs, single drainer sink unit with mixer tap, fitted oven with four ring gas hob and extractor above, space for washing machine, space for fridge/freezer, double glazed French doors to outside, two double glazed windows, radiator.



FIRST FLOOR LANDING

Stairs to second floor.

SPACIOUS BATHROOM

10'0 x 7'6 (3.05m x 2.29m)
Panelled bath with shower fittings over, low level WC, pedestal wash hand basin, airing cupboard with wall mounted central heating boiler, frosted double glazed window, wall board splash backs, radiator.



BEDROOM ONE

11'3 x 10'10 (3.43m x 3.30m)
Double glazed window, radiator, built in wardrobe.



SECOND FLOOR

BEDROOM TWO

13'11 x 10'6 part restricted head height (4.24m x 3.20m part restricted head height)
Double glazed Velux style window, radiator.



EXTERNALLY

The property benefits from a walled frontage together with an enclosed rear yard.

