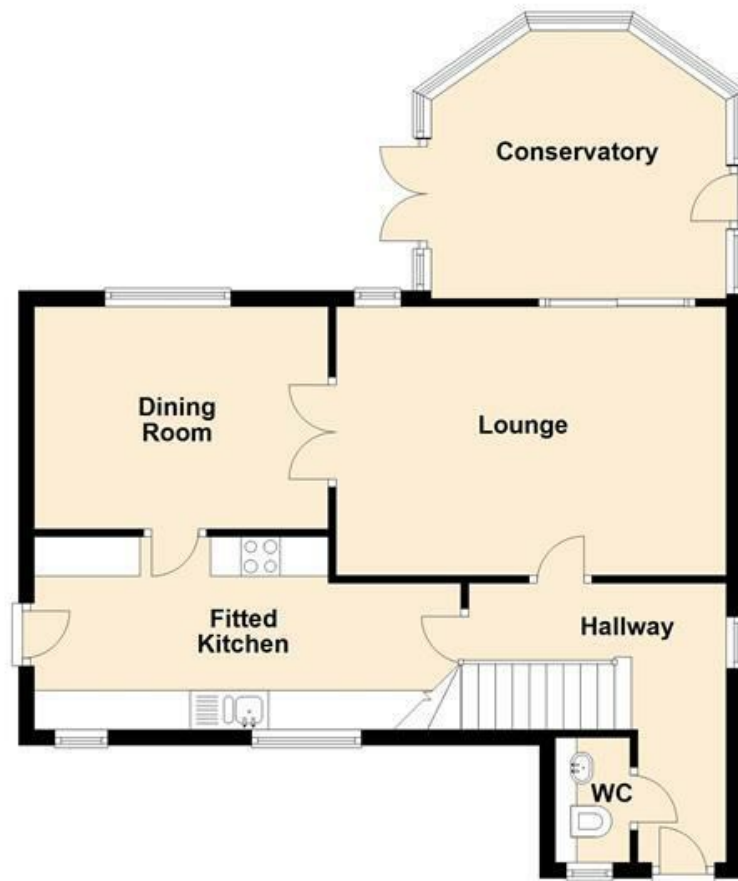


Ground Floor



First Floor



**SALE AGREED WITHIN 24 HOURS!!** A superb detached family home situated within a highly popular development and benefitting from a **GOOD SIZED CORNER PLOT** together with a **DETACHED DOUBLE GARAGE**. Offering well presented accommodation throughout including; hallway, WC, lounge, dining room, conservatory, fitted kitchen, **FOUR BEDROOMS** (master with en-suite) and family bathroom. Externally there is a driveway together with gardens to three sides.

8 The Quadrant, Buxton, Derbyshire, SK17 6AW  
T. 01298 23038 | | [www.wrightmarshall.co.uk](http://www.wrightmarshall.co.uk)

Buxton | Chester | Crewe | Knutsford | Nantwich | Northwich | Tarporley

MISREPRESENTATION ACT 1967.

Messrs Wright Marshall for themselves and for the vendors or Lessors of this property, whose agents they are, give notice that:

1. The particulars are set out as general outline only for the guidance of intending purchasers, and do not constitute, nor constitute part of, an offer or contract.
2. All descriptions and references to condition and necessary permissions for use and occupation, and other details are given in good faith and are believed to be correct but any intending purchasers or tenants should not rely on them as statements or representations of fact but must satisfy themselves by inspection or otherwise as to the correctness of each of them.
3. No person in the employment of Messrs. Wright Marshall has any authority to make any representation whatever in relation to this property.

**SALE AGREED WITHIN 24 HOURS!!**. A superb detached family home situated within a highly popular development and benefitting from a **GOOD SIZED CORNER PLOT** together with a **DETACHED DOUBLE GARAGE**. Offering well presented accommodation throughout including; hallway, WC, lounge, dining room, conservatory, fitted kitchen, **FOUR BEDROOMS** (master with en-suite) and family bathroom. Externally there is a driveway together with gardens to three sides.

**ENTRANCE HALLWAY**

Double glazed entrance door, double glazed window, stairs to first floor, radiator.

**DOWNSTAIRS WC**

Enclosed heated towel rail, cistern WC, vanity wash hand basin, part tiled walls, frosted double glazed window, ceiling coving, wood effect flooring.



**LOUNGE**

16'4 x 11'3 (4.98m x 3.43m)  
Double glazed window, radiator, feature fireplace with marble effect surround and living flame gas fire, double glazed window, ceiling coving and double glazed sliding patio doors leading to conservatory.



**DINING ROOM**

12'4 x 9'3 (3.76m x 2.82m)  
Double glazed window, radiator, ceiling coving, glazed double doors from lounge.



**CONSERVATORY**

12'3 x 11'3 (3.73m x 3.43m)  
Double glazed windows to three sides overlooking the gardens, double glazed French doors, radiator and further double glazed door to outside.



**FITTED KITCHEN**

17'11 x 8'0 (5.46m x 2.44m)  
Fitted with a range of wall and base mounted units with work surfaces over and tiled splash backs, single drainer sink unit with mixer tap, space for dishwasher, washing machine, fridge and freezer, fitted double oven with four ring electric hob and extractor above, two double glazed windows, double glazed door to outside, radiator, tiled flooring, cupboard housing wall mounted central heating boiler.



**FIRST FLOOR LANDING**

Double glazed window, dado rail, ceiling coving, airing cupboard with hot water cylinder.

**MASTER BEDROOM**

17'11 narrowing to 14'8 x 10'10 (5.46m narrowing to 4.47m x 3.30m)  
Two double glazed windows, radiator, dado rail, ceiling coving, built in wardrobe, door to;



**EN-SUITE**

Double shower cubicle with shower fittings over, vanity wash hand basin with cupboards beneath, low level WC, heated towel rail, frosted double glazed window, wood effect flooring.



**BEDROOM TWO**

11'3 x 8'7 (3.43m x 2.62m)  
Double glazed window, radiator, ceiling coving.



**BEDROOM THREE**

9'0 x 6'10 (2.74m x 2.08m)  
Double glazed window, radiator, ceiling coving.

**BEDROOM FOUR**

8'6 x 7'2 (2.59m x 2.18m)  
Double glazed window, radiator, ceiling coving.

**FAMILY BATHROOM**

Panelled bath with shower fittings over, low level WC, wash hand basin, radiator, part tiled walls, frosted double glazed window.



**EXTERNALLY**

To the front of the house there is a driveway leading to an detached double garage together with garden frontage including mature plantings and gated access to the rear.

The rear of the property benefits from a delightful corner plot and includes a good sized patio area with seating and raised borders this leads to the main garden which is laid to lawn with borders, a further patio area and has enclosed boundaries with further mature plantings.



**DETACHED DOUBLE GARAGE**

Electric up and over door, power and lighting.