

Because life is

Petty<sup>TM</sup>  
Real

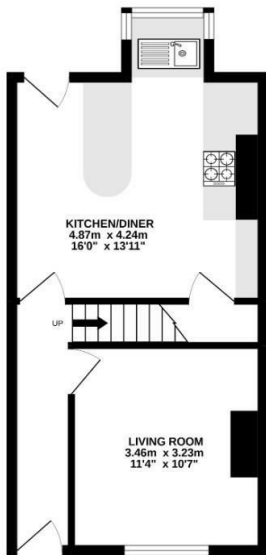
42 Fife Street  
Barrowford  
BB9 6DD



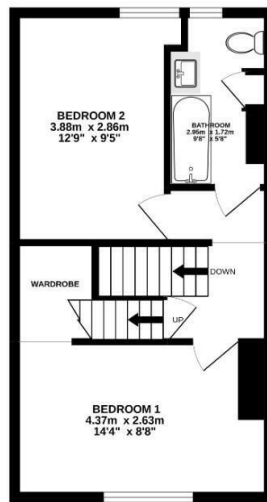
For Sale  
Offers In The Region Of £135,000



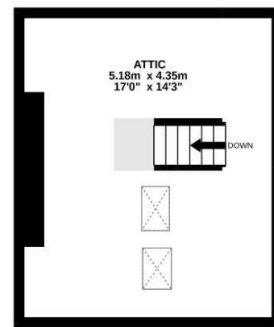
GROUND FLOOR  
34.3 sq.m. (369 sq.ft.) approx.



1ST FLOOR  
34.2 sq.m. (369 sq.ft.) approx.



2ND FLOOR  
21.9 sq.m. (235 sq.ft.) approx.



TOTAL FLOOR AREA : 90.4 sq.m. (973 sq.ft.) approx.

Whilst every attempt has been made to ensure the accuracy of the floorplan contained here, measurements of doors, windows, rooms and any other items are approximate and no responsibility is taken for any error, omission or mis-statement. This plan is for illustrative purposes only and should be used as such by any prospective purchaser. The services, systems and appliances shown have not been tested and no guarantee as to their operability or efficiency can be given.  
Made with Metroplan 62022



These particulars, whilst believed to be accurate are set out as a general outline only for guidance and do not constitute any part of an offer or contract. Intending purchasers should not rely on them as statements of representation of fact, but must satisfy themselves by inspection or otherwise as to their accuracy. No person in this firm's employment has the authority to make or give any representation or warranty in respect of the property.