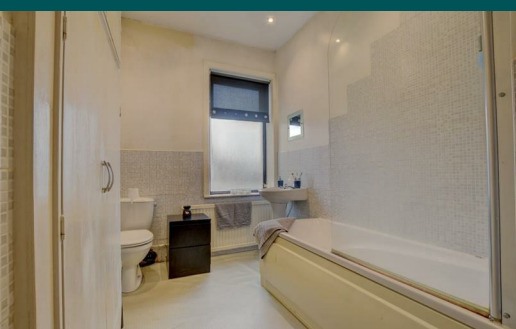


Because life is

PettyTM
Real

30 Lonsdale Street
Burnley
Lancashire
BB12 6DZ



For Sale

- Mid-Terrace
- Two Bedrooms
- Two Reception Rooms
- Three-Piece Bathroom
- Gas Fire

Offers Over £70,000

- Tenant In Situ
- Perfect For An Investor
- Close To Motorway Links
- Near To Local Schools
- Accompanied Viewings

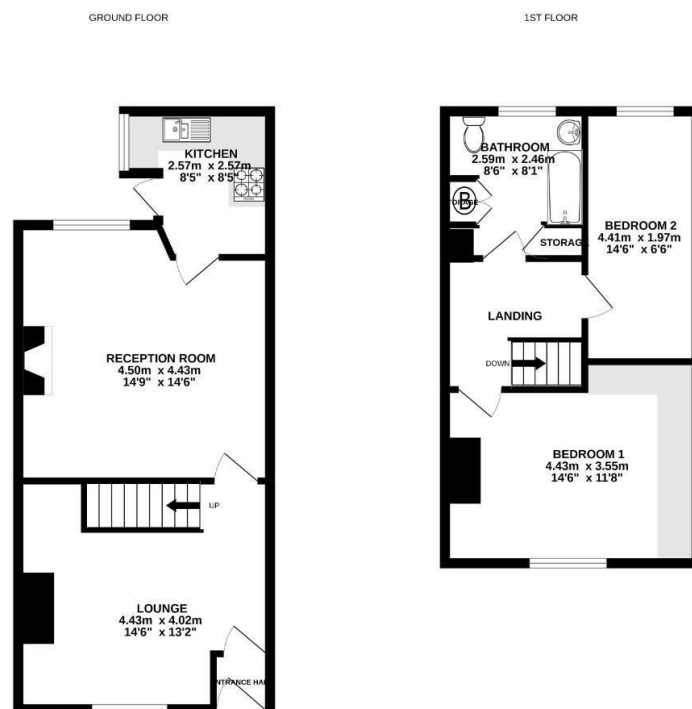


Attention all landlords! Two-bed mid-terrace with a sitting tenant paying £425 PCM. Close to bus stops, local schools, and transport links connecting to Leeds, Preston & Manchester.

The property briefly comprises a lounge, dining room with a gas fire, kitchen with matching wall, base, and drawer units with contrasting work surfaces.

On the first floor, there is a double bedroom with fitted wardrobes and a generous-sized single bedroom to the rear. The three-piece bathroom suite comprises a low-level WC, pedestal hand wash basin, and a paneled bath with an overhead shower.

Externally there is a private enclosed yard to the rear.



Whilst every attempt has been made to ensure the accuracy of the floorplan contained here, measurements of doors, windows, stairs and any other items are approximate and no responsibility is taken for any error, omission or misstatement. This plan is for illustrative purposes only and should be used as such for any prospective purchaser. The services, systems and appliances shown have not been tested and no guarantee as to their operability or efficiency can be given. Please visit www.pettyreal.co.uk



These particulars, whilst believed to be accurate are set out as a general outline only for guidance and do not constitute any part of an offer or contract. Intending purchasers should not rely on them as statements of representation of fact, but must satisfy themselves by inspection or otherwise as to their accuracy. No person in this firm's employment has the authority to make or give any representation or warranty in respect of the property.