

Because life is

Petty
Real™

4 Wiltshire Avenue
Burnley
BB12 6AD



For Sale

- Semi-Detached
- Bungalow
- Two Bedrooms
- Detached Garage
- Driveway

Offers Over £150,000

- Large Garden
- Kitchen/Diner
- Good Transport Links
- Close To Local Amenities
- Spacious Living Accomodation



An immaculately presented two bedroom, semi-detached bungalow in a popular area of Burnley, close to local amenities, Sycamore Park, Lowerhouse Cricket Club, primary and secondary schools and the M65 with transport links to Manchester, Blackburn and Preston.

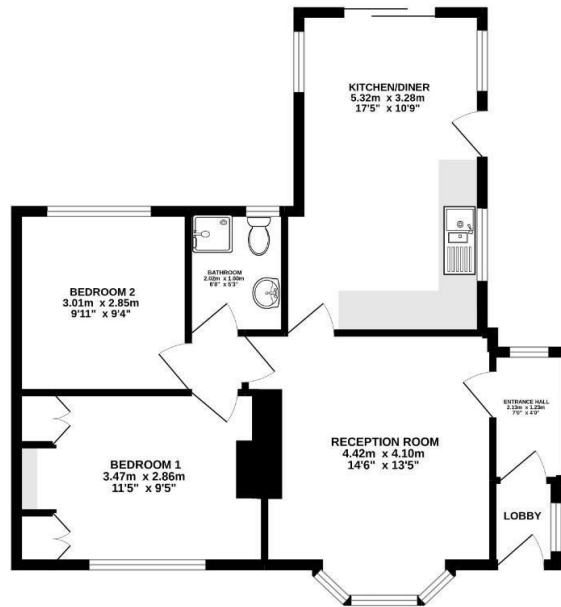
The property briefly comprises an entrance lobby and hallway as you enter the property leading to the living room, featuring a bay window. Adjacent to the living room is a spacious kitchen/diner which houses matching wall, base and drawer units with contrasting work surfaces and a double bowl stainless steel sink with patio doors leading out to the rear garden.

Also adjoining the living room is a central hallway with access to two generous double bedrooms, the master bedroom benefitting from built-in wardrobes and a bathroom housing a three-piece suite comprising a low-level WC, pedestal wash basin and shower cubicle.

The property benefits from the modern-day comforts of gas central heating and UPVC double glazing.

Externally there is a turfed garden to the front with a driveway leading to a detached garage and an enclosed garden to the rear with a lawn and patio area.

GROUND FLOOR
60.1 sq.m. (647 sq.ft.) approx.



TOTAL FLOOR AREA: 60.1 sq.m. (647 sq.ft.) approx.
While every attempt has been made to ensure the accuracy of the floorplan contained here, measurements of floors, walls, base, rooms and any other items are approximate and no responsibility is taken for any error, omission or misstatement. This plan is for illustration purposes only and should be used as such by any prospective purchaser. The services, systems and appliances shown have not been tested and no guarantee as to their operability or efficiency can be given.
Made with Metrepro 5/2017



These particulars, whilst believed to be accurate are set out as a general outline only for guidance and do not constitute any part of an offer or contract. Intending purchasers should not rely on them as statements of representation of fact, but must satisfy themselves by inspection or otherwise as to their accuracy. No person in this firm's employment has the authority to make or give any representation or warranty in respect of the property.

26 Manchester Road, Burnley, Lancashire, BB11 1HH
T.

burnley.sales@pettyreal.co.uk burnley.lettings@pettyreal.co.uk
property.management@pettyreal.co.uk

www.pettyreal.co.uk