

Because life is

PettyTM
Real

6 The Meadows
Colne
BB8 7ET



For Sale

- Immaculately Presented
- Bungalow
- Three Bedrooms
- Spacious living Accommodation
- Large Kitch/Diner

Offers Over £250,000

- Off Road Parking
- Garage
- Shower Room
- Quiet Residential Area
- Close To Local Amenities



An immaculately presented three bedroom bungalow located on an established and popular residential development on the outskirts of Colne but within easy driving distance of local amenities, Schools and open countryside, this spacious detached home is an ideal purchase for someone looking to downsize and live all on one level.

The property briefly comprises a centrally located entrance hallway leading to a spacious living room featuring a bay window and wooden fireplace with gas fire, and a large double bedroom to the front of the property, also boasting a bay window.

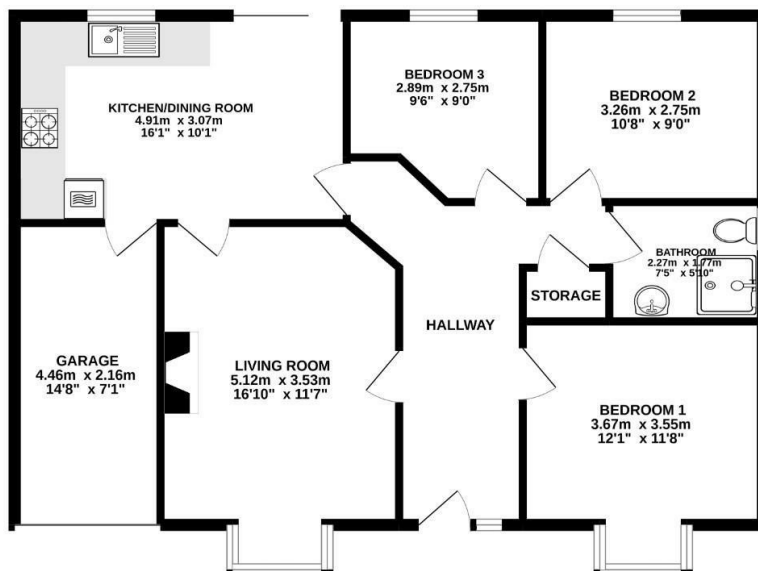
Towards the rear of the house is a second double bedroom, a generous single bedroom, both with views to the rear garden and a shower room housing a three piece suite comprising a low level WC, wash basin with vanity unit and Shower cubicle.

The large kitchen/diner adjoins the living room and houses an array of matching wall, base and drawer units with contrasting work surfaces, stainless steel sink, double oven, gas hob, a door accessing the integral garage and patio doors leading to the well kept rear garden.

The property benefits from the modern day comforts of gas central heating and UPVC double glazing.

Externally, to the front of the property is off road parking leading to the garage and a garden area laid mainly to lawn with gravel bordering, and to the rear a landscaped garden with patio area and mature plant beds.

GROUND FLOOR
84.5 sq.m. (909 sq.ft.) approx.



TOTAL FLOOR AREA: 84.5 sq.m. (909 sq.ft.) approx.

Whilst every attempt has been made to ensure the accuracy of the floorplan contained here, measurements of plots, rooms, floors and any other items are approximate and no responsibility is taken for any error, omission or mis-statement. This plan is for illustrative purposes only and should be used as such by any prospective purchaser. The layout, contents and appearance shown have not been tested and no guarantee as to their suitability or efficiency can be given.
Made with: Neopix (02022)



These particulars, whilst believed to be accurate are set out as a general outline only for guidance and do not constitute any part of an offer or contract. Intending purchasers should not rely on them as statements of representation of fact, but must satisfy themselves by inspection or otherwise as to their accuracy. No person in this firm's employment has the authority to make or give any representation or warranty in respect of the property.