

Because life is

Petty  
Real™

Spruce View 2  
Forest f Pendle Leisure Park  
Roughlee  
BB9 6NR



For Sale

£176,000

- Brand new park home
- Sought after location
- Stunning views
- Within a short drive of Barrowford
- Open plan lounge and modern kitchen
- Two double bedrooms
- Ensuite and house bathroom
- Decked area and off road parking
- Site fees payable
- No chain



Embrace Tranquil Living with a Stunning Park Home!

Are you ready to embark on a journey of serenity and breathtaking natural beauty? Your dream home awaits on The Forest of Pendle Leisure park, offering an exceptional opportunity to own a fully furnished park home with unparalleled views of majestic Pendle Hill. Welcome to a life of peace, comfort, and leisure, where every day feels like a vacation!

Nature's Beauty Right at Your Doorstep

Nestled within the serene confines of the popular private park home site, this spacious two-bedroom park home invites you to embrace a tranquil lifestyle like no other. You'll be captivated by the ever-changing beauty of the Pendle Hill, which stands as a testament to the wonders of nature. Each day, you'll wake up to the awe-inspiring views, filling your soul with a sense of wonder and tranquility.

A Home of Elegance and Comfort

The interior of this park home is a haven of comfort and style. The open-plan living space seamlessly blends a well-appointed lounge and kitchen, creating a welcoming environment for both relaxation and entertaining. The kitchen is fully equipped, making meal preparation a breeze.

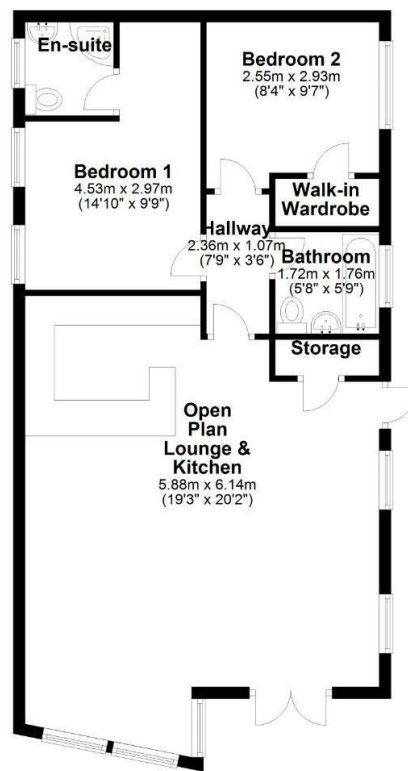
The master bedroom, a spacious retreat, boasts an en-suite bathroom, ensuring your privacy and convenience. A second double bedroom, complete with a built-in wardrobe, offers ample space for guests or family members. A separate bathroom adds to the convenience and functionality of the home.

Outdoor Living with a View

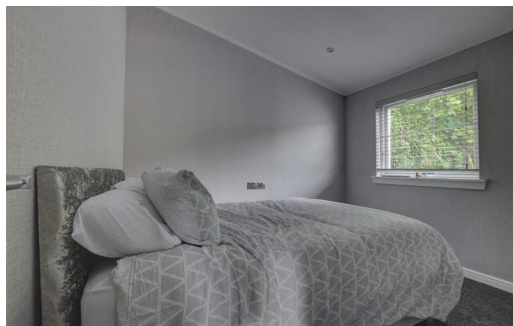
Step outside and experience the true essence of outdoor living. A decked patio to the front and side of the park home is the perfect spot to enjoy your morning coffee or dine under the open sky.

### Ground Floor

Approx. 70.1 sq. metres (754.1 sq. feet)



Total area: approx. 70.1 sq. metres (754.1 sq. feet)



These particulars, whilst believed to be accurate are set out as a general outline only for guidance and do not constitute any part of an offer or contract. Intending purchasers should not rely on them as statements of representation of fact, but must satisfy themselves by inspection or otherwise as to their accuracy. No person in this firm's employment has the authority to make or give any representation or warranty in respect of the property.

134 Gisburn Road, Barrowford, Lancashire, BB9 6HQ  
T. 01282 615900  
Barrowford.sales@pettyreal.co.uk

[www.pettyreal.co.uk](http://www.pettyreal.co.uk)