

Because life is

Petty<sup>TM</sup>  
Real

16 Carr Hall Road  
Barrowford  
BB9 6BX



For Sale

£215,000

- Spacious bay fronted mid terrace
- Sought after location
- Near to Victoria park
- Ideal for a growing family
- Three reception rooms

- Seperate kitchen
- Bathroom & seperate wc
- Four bedroom
- Ensuite shower room
- Viewing recommended

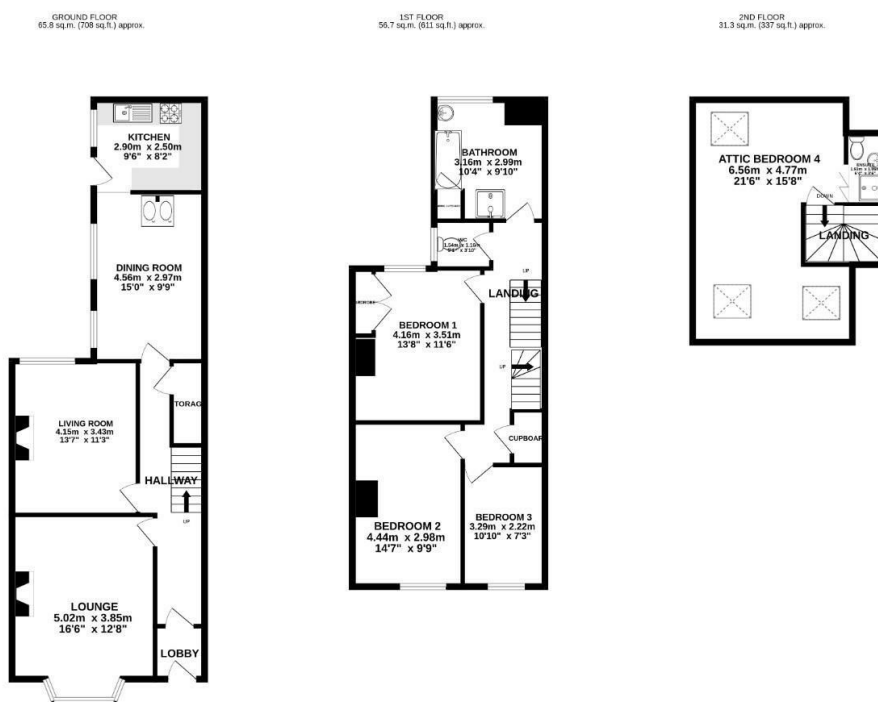


Nestled in the prestigious Carr Hall district of Barrowford, this remarkable bay-fronted mid-terrace home awaits a discerning family seeking a spacious and inviting retreat. Offering an ideal haven for growing families, this exquisite residence boasts a wealth of features that will truly capture your heart.

Upon entering this delightful property, you are greeted by an inviting entrance lobby and hallway. This exceptional home presents an array of versatile living spaces, including a cozy lounge, a charming sitting room, and a dining room. These rooms offer the ideal backdrop for both intimate gatherings and grand celebrations. The separate kitchen provides ample space for culinary creativity, allowing you to whip up delicious meals with ease.

Ascending the staircase to the first floor, you'll find three generously sized bedrooms. An adjoining three-piece bathroom and a separate WC cater to the convenience of your family. Venture up to the second floor, and you'll discover a hidden gem – an attic 4th bedroom complete with a three-piece ensuite bathroom. This private sanctuary is perfect for a teenager's haven, a guest suite, or even a home office, ensuring you have the space you need for all your family's needs.

Step outside to discover the garden forecourt at the front. The courtyard garden at the rear offers a peaceful retreat, ideal for al fresco dining, gardening, or simply unwinding after a long day.



**TOTAL FLOOR AREA: 153.8 sq.m. (1656 sq.ft.) approx.**

Whilst every effort has been made to ensure the accuracy of the floorplans contained here, measurements of doors, windows, rooms and any other items are approximate and no responsibility is taken for any error, omission or mis-statement. This plan is for illustrative purposes only and should be used as such by any prospective purchaser. The services, systems and appliances shown have not been tested and no guarantee as to their operability or efficiency can be given.  
Made with Metreplex ©2023



These particulars, whilst believed to be accurate are set out as a general outline only for guidance and do not constitute any part of an offer or contract. Intending purchasers should not rely on them as statements of representation of fact, but must satisfy themselves by inspection or otherwise as to their accuracy. No person in this firm's employment has the authority to make or give any representation or warranty in respect of the property.

134 Gisburn Road, Barrowford, Lancashire, BB9 6HQ  
T. 01282 615900  
Barrowford.sales@pettyreal.co.uk

[www.pettyreal.co.uk](http://www.pettyreal.co.uk)