

Because life is

Petty
Real™

13 Romford Street
Burnley
BB12 8AF



For Sale

Price £155,000

- Mid-Terrace House
- Three Bedrooms
- Two Reception Rooms
- Modern Kitchen
- Family Home

- Modern bathroom
- Near To Transport Links
- Close To Schools
- Quiet Location
- Viewings Recommended



This is a fantastic opportunity to own a three-bedroom terraced house full of charm and character. Located in the popular area of Ightenhill close to schools, amenities, and transport links. This house would be perfect for first-time buyers or growing families.

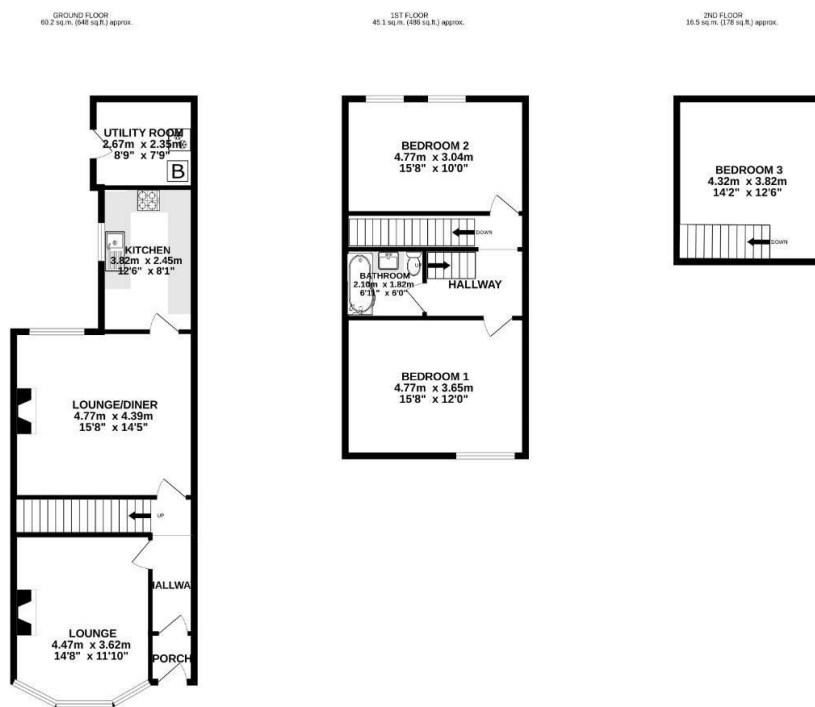
The property is split over three floors. The ground floor comprises a hallway, spacious lounge, lounge/diner and a large kitchen. The first floor includes two double bedrooms and a bathroom. The third floor is an attic style bedroom.

The modern kitchen houses matching wall, base, and drawer units with contrasting work surfaces, a matt black sink and an integrated oven with an extractor fan. All surrounded by grey embossed tiles. The bathroom comprises a vanity with sink, panel bath with an overhead shower, and a low-level W.C. All surrounded by clean white tiling. The lounge/diner is roomy and cozy offering luxury comfort with a log burner fireplace.

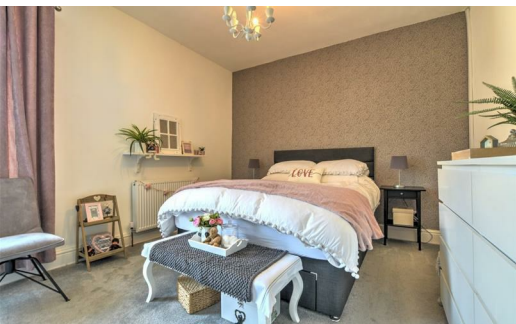
To the rear of the property is an enclosed back garden perfect for all kinds of summer activities. There is also a utility room in the back yard.

The entire property benefits from the modern-day comforts of UPVC double glazing and gas central heating.

Viewings are highly recommended!



TOTAL FLOOR AREA: 121.8 sq.m. (1311 sq.ft.) approx.
 Whilst every attempt has been made to ensure the accuracy of the floorplans contained here, measurements of doors, windows, rooms and any other items are approximate and no responsibility is taken for any error, omission or mis-statement. This plan is for illustrative purposes only and should be used as such by any prospective purchaser. The services, systems and appliances shown have not been tested and no guarantee as to their condition or efficiency can be given.
 Made with Metropix ©2023



These particulars, whilst believed to be accurate are set out as a general outline only for guidance and do not constitute any part of an offer or contract. Intending purchasers should not rely on them as statements of representation of fact, but must satisfy themselves by inspection or otherwise as to their accuracy. No person in this firm's employment has the authority to make or give any representation or warranty in respect of the property.

4 Manchester Road, Burnley, Lancashire, BB11 1HH
 T.

burnley.sales@pettyreal.co.uk burnley.lettings@pettyreal.co.uk
property.management@pettyreal.co.uk

www.pettyreal.co.uk