

Because life is

Petty
Real™

Canal Walk Manchester Road
Hapton
Burnley
BB12 7LF



For Sale

Asking Price £209,995

- Choose your offer worth up to £3,000 ?
- Semi Detached
- Front and rear gardens
- Downstairs WC
- 10-Year NHBC Warranty

- 2 year Gleeson Warranty
- We're registered with NHQB



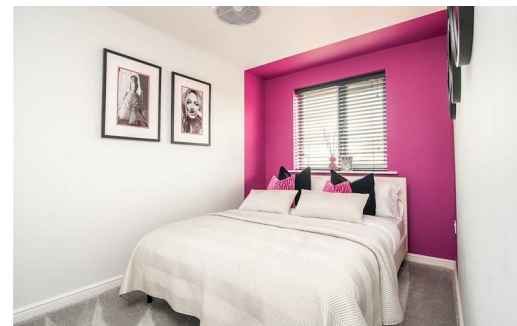
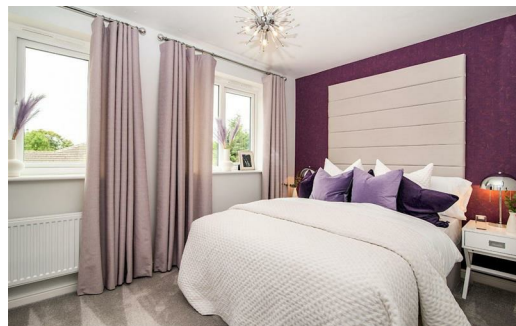
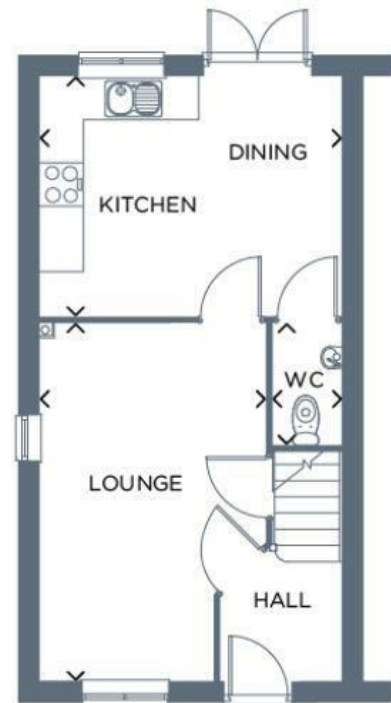
Choose from offers worth up to £3,000 when you reserve this home! ?

The home of great value!

The stunning three bedroom Lisburn offers a bright living room plus a contemporary open-plan kitchen-diner with French doors leading to the garden. A handy cloakroom completes the downstairs space. Upstairs you'll find a beautiful master bedroom and two further bedrooms, plus a family bathroom finished with Porcelanosa tiling.

Ground Floor

Room	Metres	Feet & Inches
Kitchen/Dining	4.15 x 3.31	13'7" x 10'10"
Lounge	4.95 x 3.11	16'3" x 10'2"
WC	1.70 x 0.99	5'7" x 3'3"



These particulars, whilst believed to be accurate are set out as a general outline only for guidance and do not constitute any part of an offer or contract. Intending purchasers should not rely on them as statements of representation of fact, but must satisfy themselves by inspection or otherwise as to their accuracy. No person in this firm's employment has the authority to make or give any representation or warranty in respect of the property.

26 Manchester Road, Burnley, Lancashire, BB11 1HH

T.

Burnley.sales@pettyreal.co.uk burnley.lettings@pettyreal.co.uk
property.management@pettyreal.co.uk

www.pettyreal.co.uk