

Because life is

Petty
Real™

Holbeck Park Holbeck avenue
Burnley
BB10 1DT



For Sale

£209,995

- Detached
- South Facing Garden
- Single Garage
- Registered With NHQB
- 10-Year NBC Warranty

- £7,500 Upgrade Voucher

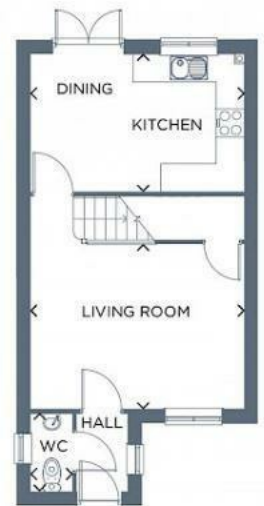


The home of great value!

The Kilkenny is a beautiful three bedroom home perfect for modern living. A bright living room featuring a stunning exposed staircase leads through to an open-plan kitchen-diner, where French doors open onto the garden creating an flexible living space. Upstairs are two double bedrooms and a versatile third bedroom, which could be utilised for a guest bedroom, child's bedroom, dressing room or office. Upstairs you'll also find a family bathroom complete with Porcelanosa tiling.

Ground Floor

Room	Metres	Feet & Inches
Kitchen/Dining	4.48 x 2.90	14'8" x 9'6"
Lounge	4.48 x 3.63	14'8" x 11'11"
WC	1.60 x 0.88	5'3" x 2'11"



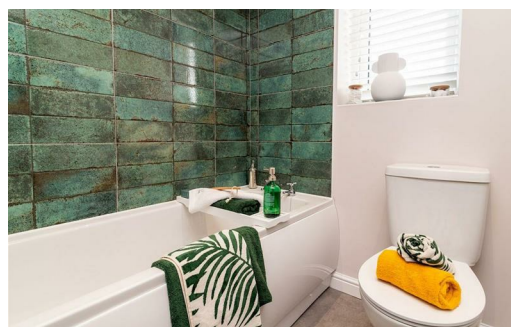
gleeson

the home of great value

Choose from one of our amazing new offers:

- £250 per month for 12 months towards your mortgage
- or £3000 deposit contribution
- or £3000 towards options and extras

*Selected plots only. Subject to terms and conditions. Speak to your Sales Executive for more information, or visit gleesohomes.co.uk/great-value



These particulars, whilst believed to be accurate are set out as a general outline only for guidance and do not constitute any part of an offer or contract. Intending purchasers should not rely on them as statements of representation of fact, but must satisfy themselves by inspection or otherwise as to their accuracy. No person in this firm's employment has the authority to make or give any representation or warranty in respect of the property.

26 Manchester Road, Burnley, Lancashire, BB11 1HH

T.

Burnley.sales@pettyreal.co.uk burnley.lettings@pettyreal.co.uk
property.management@pettyreal.co.uk

www.pettyreal.co.uk