

Because life is

Petty
Real™

Canal Walk Manchester Road
Hapton
Burnley
BB12 7LF



For Sale

Asking Price £309,995

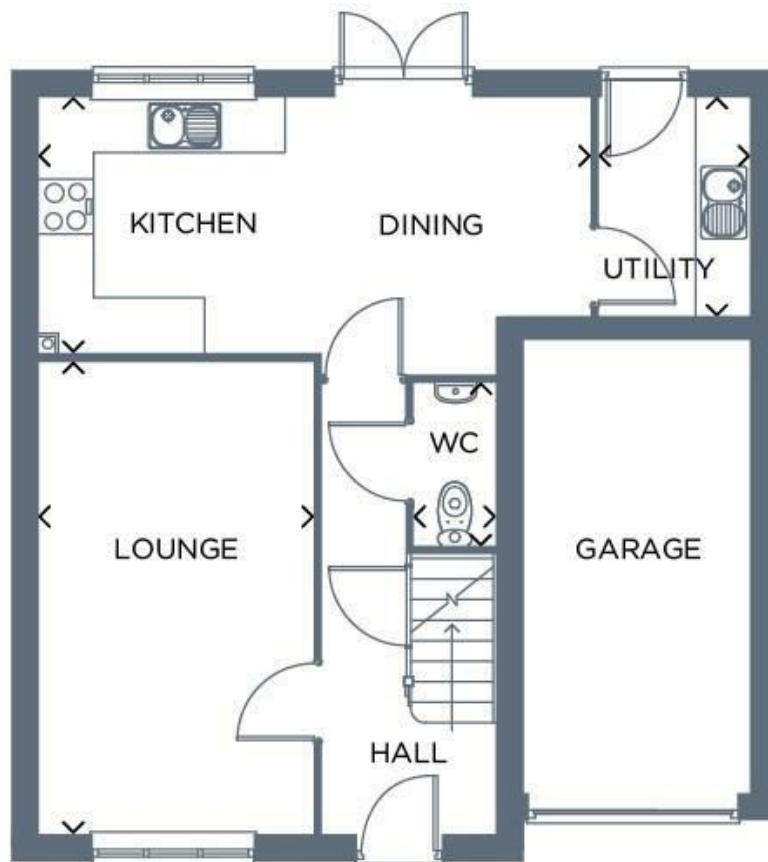
- up to £7,500 towards upgrades and extras †
- Detached home with integral garage
- Utility room
- En-suite to master bedroom
- 10-Year NHBC Warranty

- We're registered with NHQB
- † terms and conditions apply



The home of great value!

The four bedroom Waterford features an open-plan kitchen-dining area with French doors leading out to the garden, plus a useful utility room. This home benefits from a large living room and four well proportioned bedrooms, with the main bedroom featuring a private en-suite. A convenient integral garage and private drive complete this home perfectly.



These particulars, whilst believed to be accurate are set out as a general outline only for guidance and do not constitute any part of an offer or contract. Intending purchasers should not rely on them as statements of representation of fact, but must satisfy themselves by inspection or otherwise as to their accuracy. No person in this firm's employment has the authority to make or give any representation or warranty in respect of the property.

26 Manchester Road, Burnley, Lancashire, BB11 1HH

T.

Burnley.sales@pettyreal.co.uk burnley.lettings@pettyreal.co.uk
property.management@pettyreal.co.uk

www.pettyreal.co.uk