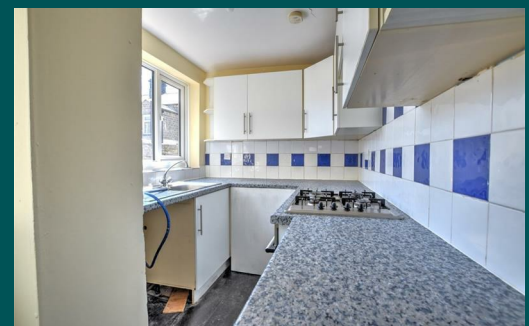


Because life is

PettyTM
Real

21 Lord Street
Colne
BB8 9AR



For Sale

£600 PCM

- Terrace House
- Two Bedrooms
- Modern Kitchen
- Fully Fitted Bathroom
- Dining Room

- EPC: D
- Tax Band A
- Near To Transport Links
- Deposit £600
- No smokers



This is a fantastic opportunity to rent a beautiful two-bedroom terrace house full of charm and character. Located in the popular area of Colne. Close to schools, amenities, and transport links. This house would be perfect for first-time buyers or growing families.

The property is split over two floors. The ground floor includes a large reception room, dining room, and a spacious kitchen. The modern kitchen houses matching wall, base, and drawer units with contrasting work surfaces, a stainless steel sink, an integrated oven, and a checkered tiled splashback.

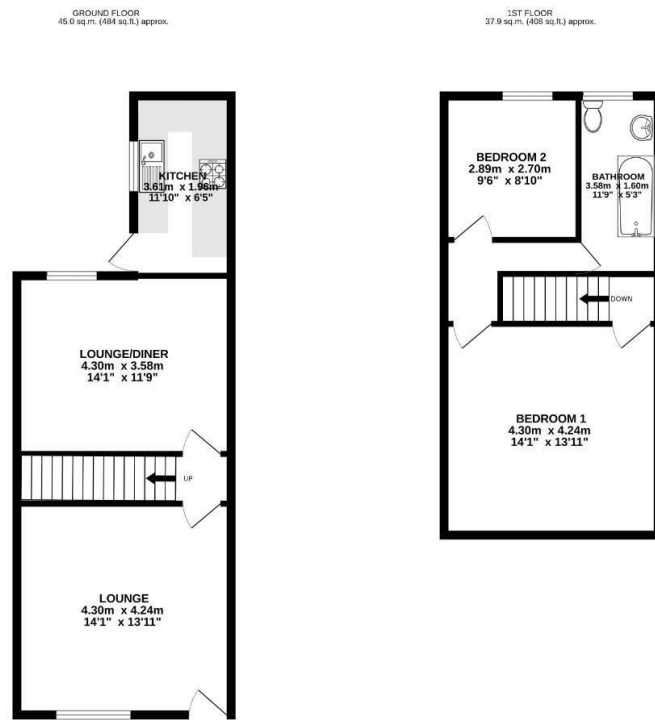
The first floor includes two large bedrooms and a bathroom. The bathroom is a three-piece white-piece suite comprising, a full basin, a panel bath with an overhead shower with screen, and low-level W.C. The bedrooms offer the luxury of great storage space.

To the rear of the property is an enclosed yard. The entire property benefits from the modern-day comforts of UPVC double glazing and gas central heating.

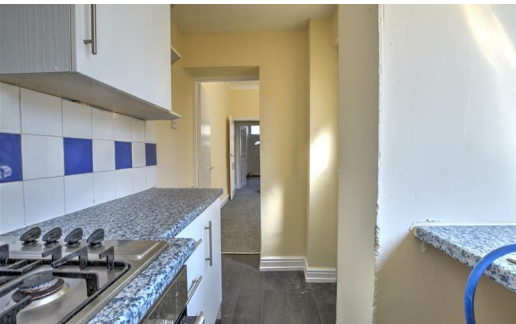
Our initial tenancy agreements are for 6 or 12 months.

Although these particulars are thought to be materially correct their accuracy cannot be guaranteed and they do not form part of any contract.

A holding deposit capped at one week's rent to reserve the property. If the application is successful this can be used towards the rent and deposit.



TOTAL FLOOR AREA: 82.9 sq m (892 sq ft) approx.
Whilst every attempt has been made to ensure the accuracy of the floorplan detailed here, measurements of walls, windows, doors and any other items that approximate and no responsibility is taken for any error, omission or misstatement. This plan is for illustrative purposes only and should be used as such by any prospective purchaser. The services, systems and appliances shown have not been tested and no guarantee, as to their operability or efficiency can be given.
Metel real (UK) plc 2022



These particulars, whilst believed to be accurate are set out as a general outline only for guidance and do not constitute any part of an offer or contract. Intending purchasers should not rely on them as statements of representation of fact, but must satisfy themselves by inspection or otherwise as to their accuracy. No person in this firm's employment has the authority to make or give any representation or warranty in respect of the property.

4 Manchester Road, Burnley, Lancashire, BB11 1HH
T.

burnley.sales@pettyreal.co.uk burnley.lettings@pettyreal.co.uk
property.management@pettyreal.co.uk

www.pettyreal.co.uk