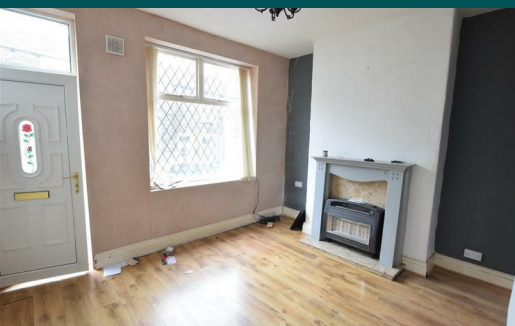


Because life is

Petty
Real™

17 Napier Street
Nelson
BB9 0SN



For Sale

- Mid terrace
- Two bedrooms
- Lounge
- Dining kitchen
- 3-piece bathroom in White

Offers Over £67,000

- Close to amenities
- Investment opportunity
- Gas CH
- Double Glazing
- Tax band A



An opportunity has arisen to acquire a stone built mid-terrace, close to local schools, transport links, and a couple of blocks away from Walverden park.

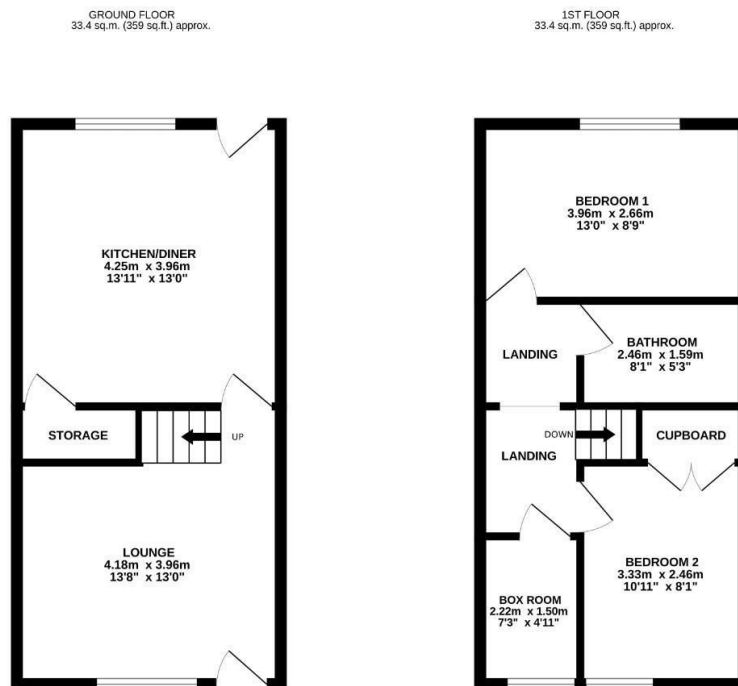
The properties accommodation briefly comprises, lounge with gas fire with surround. Fully fitted dining kitchen with matching wall, base, and drawer units with contrasting working surfaces.

The first floor has two good sized bedrooms and a three-piece bathroom suite in white comprising of panelled bath with shower over low-level WC and hand wash basin.

To the rear of the property is an enclosed yard.

The property also benefits from UPVC double glazing and gas fired central heating.

Viewing is essential



TOTAL FLOOR AREA : 66.8 sq.m. (719 sq.ft.) approx.
Whilst every attempt has been made to ensure the accuracy of the floorplan contained here, measurements of doors, windows, rooms and any other items are approximate and no responsibility is taken for any error, omission or mis-statement. This plan is for illustrative purposes only and should be used as such by any prospective purchaser. The services, systems and appliances shown have not been tested and no guarantee as to their condition or efficiency can be given.
Made with Metrigis (2023)



These particulars, whilst believed to be accurate are set out as a general outline only for guidance and do not constitute any part of an offer or contract. Intending purchasers should not rely on them as statements of representation of fact, but must satisfy themselves by inspection or otherwise as to their accuracy. No person in this firm's employment has the authority to make or give any representation or warranty in respect of the property.