

Because life is

Petty<sup>TM</sup>  
Real

281 Barkerhouse Road  
Nelson  
BB9 9LR



For Sale

Price £260,000

- Spacious stone built semi detached dwelling
- Sought after location
- Open aspect to the front
- Hallway
- Two reception rooms

- Dining kitchen
- Shower room & wc
- 4 Bedrooms
- Four piece bathroom
- Driveway, double garage, large garden



Occupying an elevated position towards the very top of Barkerhouse Road, this impressive stone built semi detached property provides spacious family living accommodation. This superb home has a beautiful open aspect to the front with views over the surrounding countryside.

The accommodation briefly comprises on the ground floor, lovely entrance hallway complete with two sizeable reception rooms and a fully fitted separate dining kitchen. The kitchen houses an excellent range of fitted wall & base units with contrasting work surfaces and splash backs, free standing cooker, hardwood door providing access to the rear garden. Shower room with separate WC. Useful workshop with work benches and power.

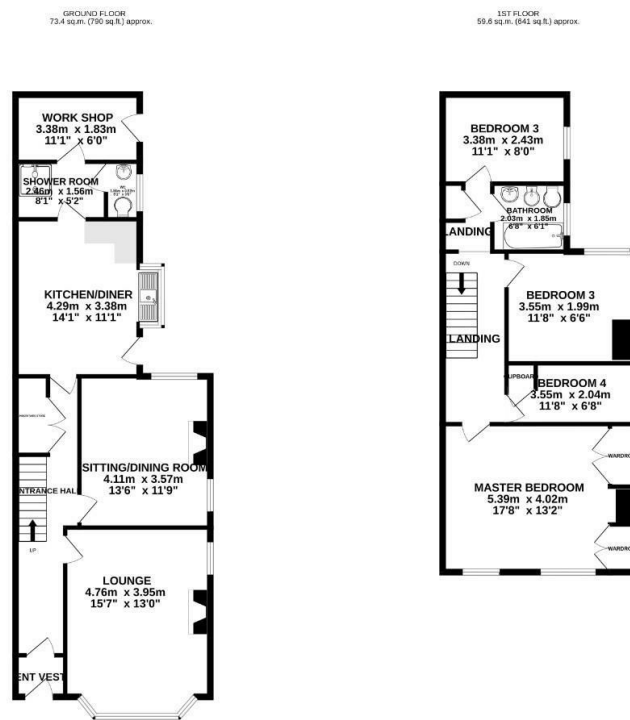
On the first floor is a fabulous double bedroom to the front of the property with two windows to take full advantage of the stunning aspect across the adjacent fields. Additionally on the first floor is a double bedroom and two single bedrooms. Bathroom houses a four piece suite which comprises, bath with shower over, low level wc, wash basin and bidet.

The property is set within sizeable gardens which are laid mainly to lawn with mature and established borders, access to the beck, patio area, summer house and large greenhouse. To the front of the property is a private driveway providing off road parking for several vehicles complete with a detached double garage.

The property is complemented by the modern day comforts of UPVC double glazing with the majority of the windows being "tilt and turn" and oil fired central heating.

Viewing is imperative to fully appreciate the property's position and beautifully appointed accommodation.

No onward chain.



TOTAL FLOOR AREA: 133.0 sq.m. (1431 sq.ft.) approx.  
 Whilst every attempt has been made to ensure the accuracy of the floorplans contained herein, measurements of floors, walls, ceilings, stairs and any other items are approximate and no responsibility is taken for any error, omission or mis-statement. This plan is for illustrative purposes only and should be used as such by any prospective purchaser. The services, materials and appliances shown have not been tested and no guarantee as to their availability or efficiency can be given.  
 Made with Bluewin 5/2013



These particulars, whilst believed to be accurate are set out as a general outline only for guidance and do not constitute any part of an offer or contract. Intending purchasers should not rely on them as statements of representation of fact, but must satisfy themselves by inspection or otherwise as to their accuracy. No person in this firm's employment has the authority to make or give any representation or warranty in respect of the property.

11 Albert Road, Colne, Lancashire, BB8 0RY  
 T. 01282 868686  
 Colne.sales@pettyreal.co.uk

[www.pettyreal.co.uk](http://www.pettyreal.co.uk)