



EXTENDED ACCOMMODATION - A spacious stone built end of terrace property situated within a popular location. Comprising; entrance porch, lounge, dining room, extended kitchen, WC, utility cupboard, cellar room, **THREE BEDROOMS** and fitted bathroom. Externally there is garden frontage together with an enclosed rear garden with decking. **VIEWING RECOMMENDED.**

8 The Quadrant, Buxton, Derbyshire, SK17 6AW
T. 01298 23038 | | www.wrightmarshall.co.uk

Buxton | Chester | Crewe | Knutsford | Nantwich | Northwich | Tarporley

MISREPRESENTATION ACT 1967.

Messrs Wright Marshall for themselves and for the vendors or Lessors of this property, whose agents they are, give notice that:

1. The particulars are set out as general outline only for the guidance of intending purchasers, and do not constitute, nor constitute part of, an offer or contract.
2. All descriptions and references to condition and necessary permissions for use and occupation, and other details are given in good faith and are believed to be correct but any intending purchasers or tenants should not rely on them as statements or representations of fact but must satisfy themselves by inspection or otherwise as to the correctness of each of them.
3. No person in the employment of Messrs. Wright Marshall has any authority to make any representation whatever in relation to this property.

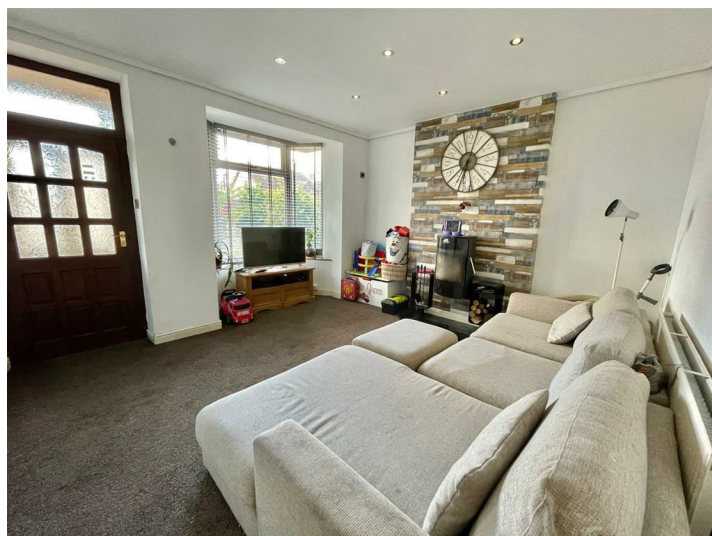
EXTENDED ACCOMMODATION - A spacious stone built end of terrace property situated within a popular location. Comprising; entrance porch, lounge, dining room, extended kitchen, WC, utility cupboard, cellar room, **THREE BEDROOMS** and fitted bathroom. Externally there is garden frontage together with an enclosed rear garden with decking. **VIEWING RECOMMENDED.**

ENTRANCE PORCH

Double glazed windows and double glazed French doors, door leading to;

LOUNGE

13'1 x 14'0 into bay (3.99m x 4.27m into bay)
Double glazed bay window, wall mounted modern cast iron stove, two radiators.

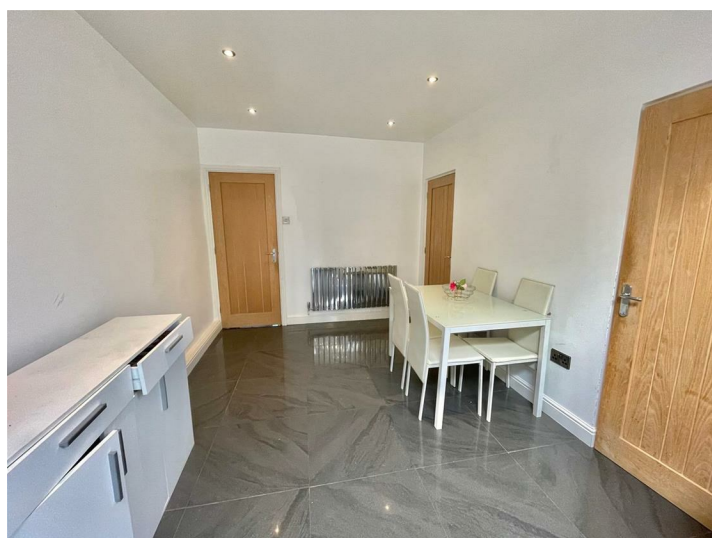


INNER HALLWAY

Stairs to first floor, door to;

DINING ROOM

10'9 x 9'0 (3.28m x 2.74m)
Tiled flooring, radiator, door to cellar, door to utility cupboard with space for washing machine, opening onto kitchen, door to;



DOWNSTAIRS WC

Low level WC, wash hand basin, extractor fan and tiled flooring.

EXTENDED KITCHEN

13'1 x 9'7 (3.99m x 2.92m)
Fitted with wall and base mounted units with composite work surfaces over, island unit with single drainer sink unit, fitted dishwasher and breakfast bar, fitted double oven, four ring electric hob with extractor above, fitted microwave, space for fridge/freezer, tiled flooring, wall mounted central heating boiler, double glazed bi-folding doors leading to garden, vaulted ceiling with four double glazed Velux style windows.

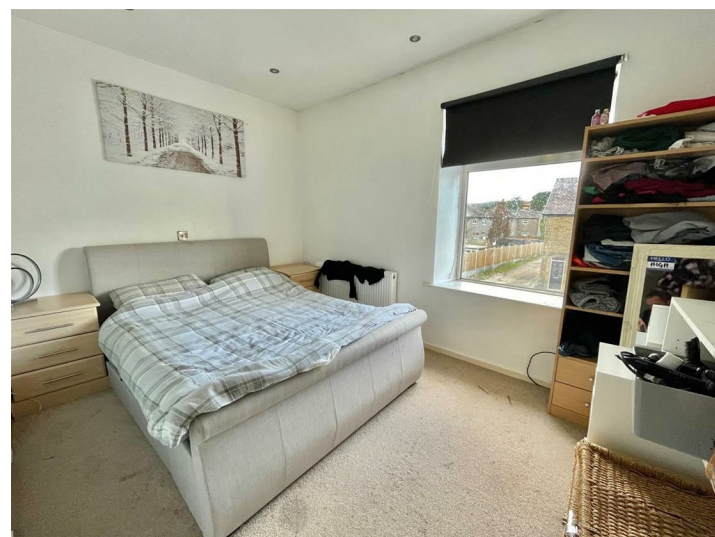


FIRST FLOOR LANDING

Door and stairs to second floor.

BEDROOM ONE

12'8 x 8'7 (3.86m x 2.62m)
Double glazed window, radiator.



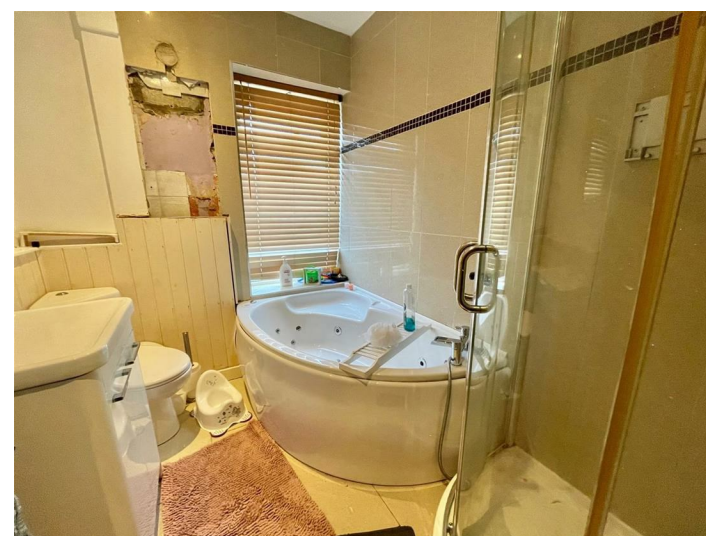
BEDROOM THREE

10'6 x 8'5 (3.20m x 2.57m)
Stripped wood flooring, built in wardrobe, double glazed window, radiator.



FAMILY BATHROOM

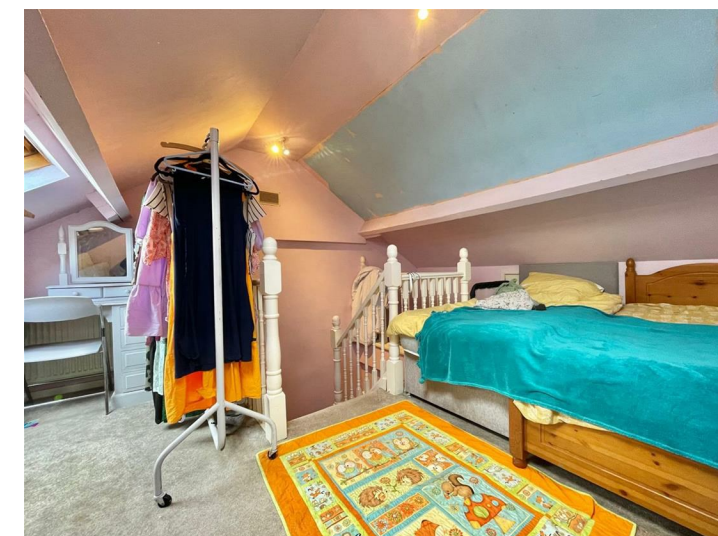
Corner Jacuzzi style bath, separate shower cubicle with shower fittings, corner WC, vanity wash hand basin, heated towel rail, part tiled walls, tiled flooring, frosted double glazed window.



SECOND FLOOR

BEDROOM TWO

14'8 x 12'4 part restricted head height (4.47m x 3.76m part restricted head height)
Two double glazed Velux style windows, eaves storage cupboard, two radiators.



EXTERNALLY

To the front of the property there is garden frontage.
The rear of the house offers a good sized decking area leading to a garden area with artificial grass and timber shed.

