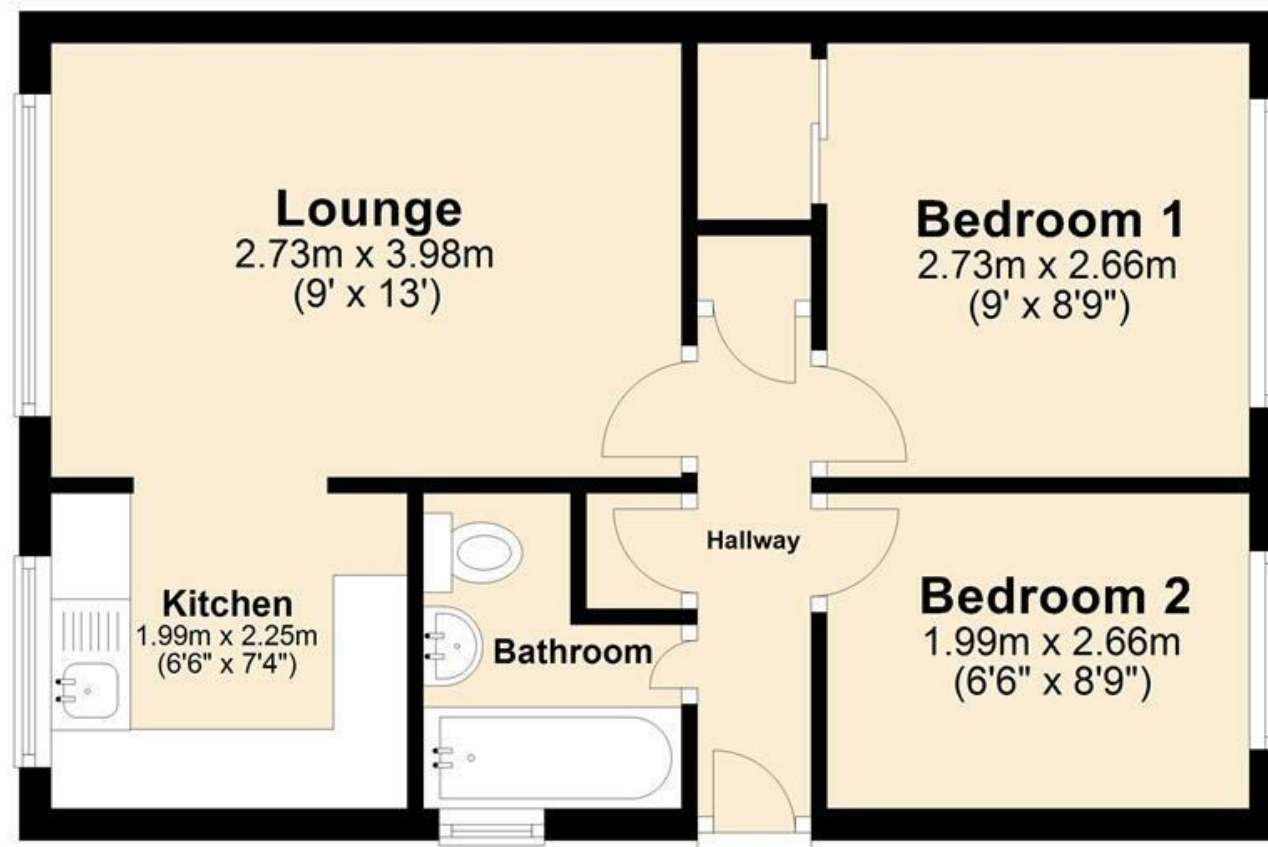


Ground Floor



MISREPRESENTATION ACT 1967.

Messrs Wright Marshall for themselves and for the vendors or Lessors of this property, whose agents they are, give notice that:

1. The particulars are set out as general outline only for the guidance of intending purchasers, and do not constitute, nor constitute part of, an offer or contract.
2. All descriptions and references to condition and necessary permissions for use and occupation, and other details are given in good faith and are believed to be correct but any intending purchasers or tenants should not rely on them as statements or representations of fact but must satisfy themselves by inspection or otherwise as to the correctness of each of them.
3. No person in the employment of Messrs. Wright Marshall has any authority to make any representation whatever in relation to this property.

TWO BEDROOM, CHAIN FREE, FIRST FLOOR apartment located in the popular Firdale Park development. The well presented accommodation includes hallway, lounge, kitchen, bathroom and two bedrooms. Externally there is an allocated parking space. Please see our video tour link below. To schedule a viewing, please call 01606 41318 or email northwich@wrightmarshall.co.uk

INTRODUCTION

CALLING ALL FIRST TIME BUYERS AND INVESTORS!! Oh have we got a treat for you! Here we have a superb first floor apartment located on the popular Firdale Park Development! The well presented accommodation includes: Hallway, Lounge, Kitchen, Two Bedrooms and Bathroom. Externally there is an allocated parking space. NO CHAIN!

HALLWAY

Accessed via double glazed entrance door. Radiator. Doors to Lounge, Bedroom & Bathroom. Two storage cupboards.

LOUNGE

12'7" x 9'1" (3.86 x 2.79)

Double glazed window. Radiator. Open to the Kitchen.

KITCHEN

7'4" x 6'9" (2.24 x 2.06)

Fitted with a range of wall, drawer and base units with work surfaces above. Inset Electric oven and hob. Space for washing machine and fridge freezer. Wall mounted boiler. Double glazed window to the front elevation.

MASTER BEDROOM

9'3" x 9'1" (2.82 x 2.79)

Double glazed window. Radiator. Built in wardrobe.

BEDROOM TWO

8'3" x 9'6" (2.54 x 2.90)

Double glazed window. Radiator.

BATHROOM

Fitted with a three piece suite including: low level WC, wash hand basin and panelled bath. Double glazed window.

EXTERNALLY

Allocated parking.