

Because life is

Petty
Real™

14 Fife Street
Barrowford
BB9 6DD



For Sale

£117,500

- Tax Band - A
- EPC - F
- Mid-Terrace
- Two Bedrooms
- Two Reception Rooms

- Modern Kitchen
- Popular Residential Location
- Gas Central Heating
- Short Drive To Local Amenities



Located in an established and popular residential area in the Carr Hall district of Barrowford, a short walking distance away from Victoria Park and a short drive of the amenities offered by both Nelson town centre and Barrowford, this attractive garden fronted mid terrace dwelling would be ideal for first time buyers.

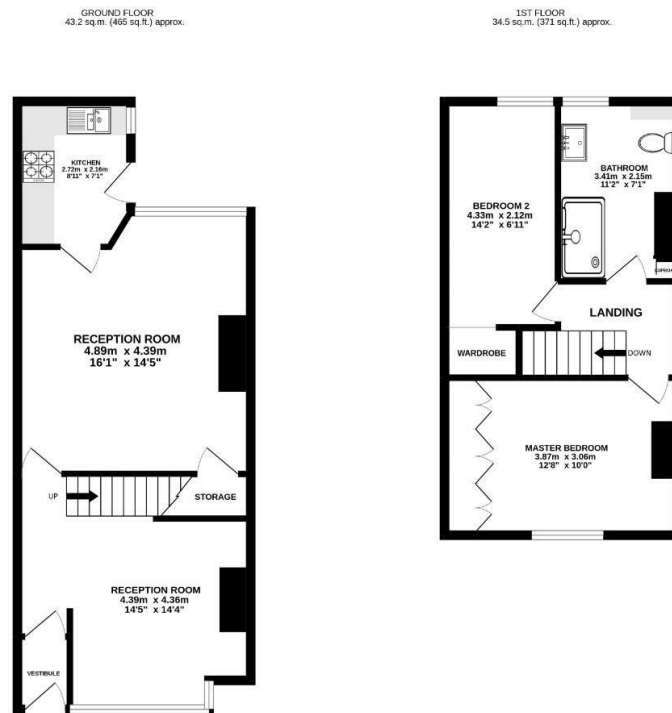
The property is arranged over two floors and briefly comprises to the ground floor: an entrance vestibule which leads to the first of two reception rooms, sat the front of the property with a semi-open staircase and boasting a stone fireplace with open fire providing an attractive focal point within the room.

Through to the rear is a spacious, second reception room with a large window letting in plenty of natural light, a fireplace with wooden mantle and multi-fuel stove and a useful under stair storage cupboard. Adjoining the rear reception room is a modern kitchen, boasting a vaulted ceiling and attractive lighting, housing matching wall, base and drawer units, with complimentary work surfaces, double bowl stainless steel sink, integrated oven and gas hob with an overhead extractor fan.

To the first floor is a central landing leading to a generous double bedroom to the front, boasting full length fitted wardrobes, a generous single bedroom to the rear with a useful over stair storage cupboard/wardrobe and a large bathroom housing a white, three piece suite comprising a low level WC, pedestal wash basin and a large walk-in shower unit.

The property benefits from the modern day comforts of gas central heating.

Externally there is an enclosed rear yard with a large stone built shed.



TOTAL FLOOR AREA: 77.6 sq.m (835 sq.ft) approx.
While every attempt has been made to ensure the accuracy of the floorplan contained here, measurements of walls, windows, rooms and any other items not appropriate and are considered to be given for any only illustrative or reference purposes. This plan is for illustrative purposes only and should be used as such by any prospective purchaser. The services, systems and appliances shown have not been tested and no guarantee as to their operability or efficiency can be given.
Made with Autocad 2007



These particulars, whilst believed to be accurate are set out as a general outline only for guidance and do not constitute any part of an offer or contract. Intending purchasers should not rely on them as statements of representation of fact, but must satisfy themselves by inspection or otherwise as to their accuracy. No person in this firm's employment has the authority to make or give any representation or warranty in respect of the property.