

Because life is

PettyTM
Real

19 Chingford Bank
Burnley
BB10 2RN



For Sale

- Middle Of Three Dwellings
- Three Bedrooms
- Kitchen/Diner
- Plenty Of Storage
- Popular Residential Area

Offers Over £90,000

- Spacious Living Accomodation
- UVPC Double Glazing
- Downstairs Cloakroom
- Large Garden
- Ideal For A Growing Family



Situated in a quiet residential area on the outskirts of Burnley, close to Burnley General Hospital and a short drive to Nelson gold club, this middle house of three, would be an ideal investment for a growing family.

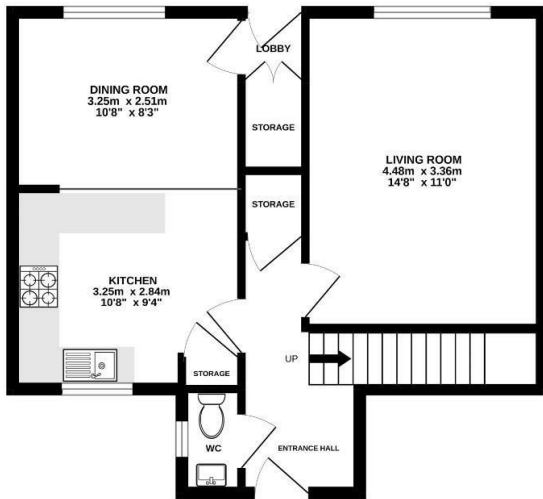
The property briefly comprises to the ground floor, an entrance hallway with stairs leading to the first floor, a downstairs cloakroom and useful storage cupboard. Adjoining the hallway is a spacious lounge with large window overlooking the rear garden and stone fireplace with electric fire. The large kitchen/diner sits opposite, benefitting from dual aspect windows and a handy storage cupboard. The kitchen houses matching wall, base and drawer units, stainless steel sink, oven and gas hob. To the rear of the property is a lobby with an extra storage cupboard and door accessing the rear garden.

To the first floor, there is a central landing leading to two generous double bedrooms and a single, two more large storage cupboards and bathroom housing a three piece suite in white comprising a low level WC, wash basin and panelled bath with overhead shower.

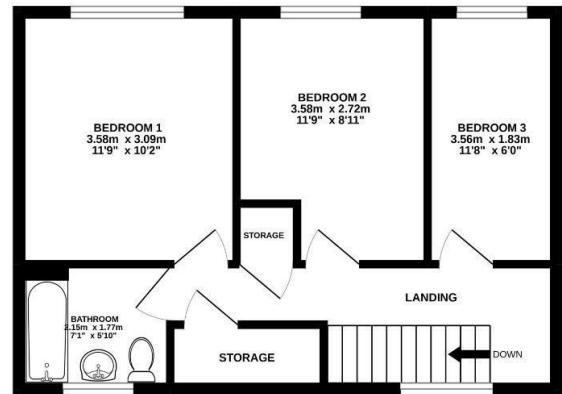
Externally there is a spacious garden to the rear, laid to lawn with a patio area and plant beds.

The property benefits from the modern day comforts of UPVC double glazing.

GROUND FLOOR
44.0 sq.m. (473 sq.ft.) approx.



1ST FLOOR
40.7 sq.m. (438 sq.ft.) approx.



TOTAL FLOOR AREA : 84.6 sq.m. (911 sq.ft.) approx.

Whilst every attempt has been made to ensure the accuracy of the floorplan contained here, measurements of doors, windows, rooms and any other items are approximate and no responsibility is taken for any error, omission or mis-statement. This plan is for illustrative purposes only and should be used as such by any prospective purchaser. The services, systems and appliances shown have not been tested and no guarantee as to their operability or efficiency can be given.
Made with Metropix ©2022



These particulars, whilst believed to be accurate are set out as a general outline only for guidance and do not constitute any part of an offer or contract. Intending purchasers should not rely on them as statements of representation of fact, but must satisfy themselves by inspection or otherwise as to their accuracy. No person in this firm's employment has the authority to make or give any representation or warranty in respect of the property.

26 Manchester Road, Burnley, Lancashire, BB11 1HH

T.

Burnley.sales@pettyreal.co.uk burnley.lettings@pettyreal.co.uk
property.management@pettyreal.co.uk

www.pettyreal.co.uk