

Because life is

PettyTM
Real

220 Briercliffe Road
Burnley
BB10 2NZ



For Sale

- HMO
- Four Double Bedrooms
- Four En-Suites
- Extended Rear Kitchen
- Close To Burnley General Hospital

Offers Over £140,000

- Perfect For Investors
- £1733.32 Gross Rent
- 15% Yield
- Fully Tenanted
- Short Walk to Burnley Town Centre



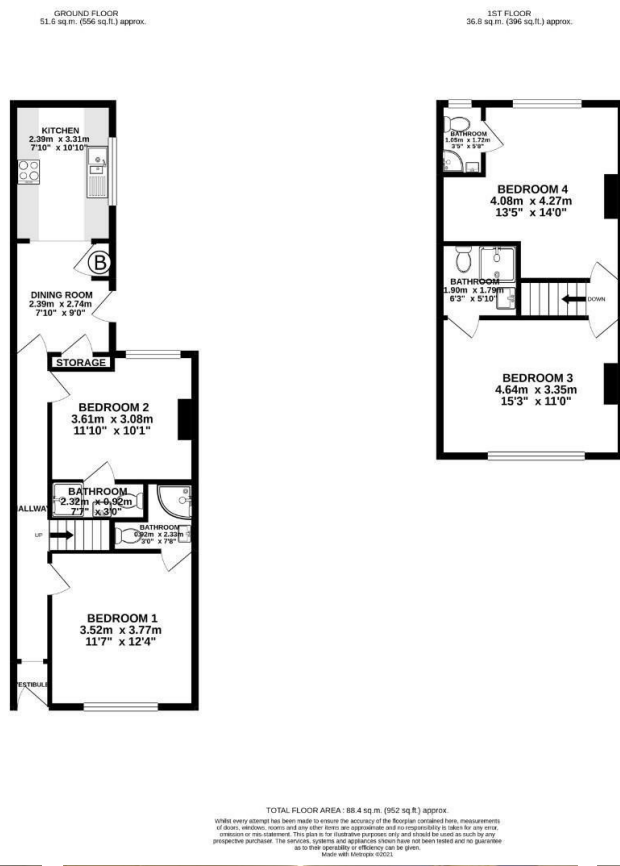
4 BED HMO! Perfect for an investor looking for a fantastic property with a high return on investment. Currently fully tenanted achieving £1733.32pcm gross rent providing a 15% yield.

Entering the property into the hallway provides access to two downstairs bedrooms both double and both benefiting from an en-suite comprising low-level WC, pedestal hand washes basin, and quadrant shower.

The shared kitchen is fitted with matching wall, base, and drawer units with contrasting working surfaces with a range of appliances such as an electric oven, hob, and a stainless sink/drain.

On the first floor, there are two double bedrooms both again with en-suites. Perfect location close to the Burnley General Hospital and a short walk to Burnley Town Centre.

Externally there is a garden forecourt to the front and an enclosed rear yard.



These particulars, whilst believed to be accurate are set out as a general outline only for guidance and do not constitute any part of an offer or contract. Intending purchasers should not rely on them as statements of representation of fact, but must satisfy themselves by inspection or otherwise as to their accuracy. No person in this firm's employment has the authority to make or give any representation or warranty in respect of the property.

26 Manchester Road, Burnley, Lancashire, BB11 1HH

T.

Burnley.sales@pettyreal.co.uk burnley.lettings@pettyreal.co.uk
property.management@pettyreal.co.uk

www.pettyreal.co.uk