

Because life is

PettyTM
Real

11 Lenches Road
Colne
BB8 8ET



For Sale

- Modern park home
- 2 Bathrooms
- Leasehold
- 2 Double bedrooms
- Spacious living/dining area

Price £169,995

- uPVC Double glazing
- Brand new fitted kitchen
- Ample off road parking
- Low maintenance garden
- Over 50's only, maintenance charge



This stunning brand new residential park home is sited on one of the parks most desirable plots with private garden and driveway to rear. The home comes with full glass fronted wrap around decking to match the homes stylish Grey Timberwolf external cladding.

The entrance of the home opens into a separate utility room with fitted washer/dryer, work surface and integrated sink as well as a storage cupboard housing the new combination boiler.

The doors then open into the inviting living dining area with generous amount of natural light through the numerous UPVC double glazed windows and french doors opening onto the glass fronted decking. The seating area is spacious and cosy with a three piece suite to match the lodges contemporary feel.

The stylish fitted kitchen comes with a range of fitted appliances including fridge, freezer, dishwasher, oven and microwave. The kitchen also has a feature island with seating area and additional storage.

The dining area has space for a family size table and chairs, enjoying view through the French doors onto the stunning glass fronted decking.

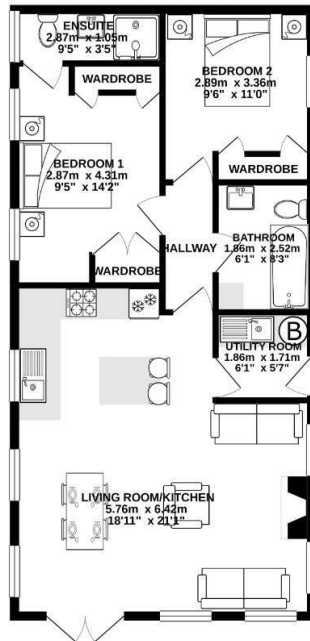
The master bedroom is light and spacious and has a wide range of fitted units including three wardrobes, dressing table, bedside cabinets and over head storage. The en-suite has a three piece suite in white with chrome finishing including corner shower unit, wc and wash hand basin with chrome heated towel rail.

The second bedroom is also a good size double room with fitted double wardrobes, dressing table, bedside cabinets and over head storage.

The family bathroom continues the contemporary feel with stylish three piece suite including bath with shower over, wc and wash hand basin again with a chrome heated towel rail.

Outside this stunning home has the benefit of one of the parks largest and most private plots. The plot includes private driveway, private garden area to the rear and full wrap around decking with glass frontage.

GROUND FLOOR
67.3 sq.m. (724 sq.ft.) approx.



TOTAL FLOOR AREA: 67.3 sq.m. (724 sq.ft.) approx.
While every attempt has been made to ensure the accuracy of the floorplan contained herein, measurements of floors, windows, doors and any other items are approximate and no responsibility is taken for any error, omission or mis-statement. This plan is for illustrative purposes only and should be used as a guide only. Prospective purchasers should verify the accuracy of the floorplan and any other information and measurements as to their own satisfaction or otherwise. Measurements are given in metres and feet and inches. Measurements are given to the nearest millimetre and are for information only. Measurements are given to the nearest millimetre and are for information only. Measurements are given to the nearest millimetre and are for information only.



These particulars, whilst believed to be accurate are set out as a general outline only for guidance and do not constitute any part of an offer or contract. Intending purchasers should not rely on them as statements of representation of fact, but must satisfy themselves by inspection or otherwise as to their accuracy. No person in this firms employment has the authority to make or give any representation or warranty in respect of the property.

11 Albert Road, Colne, Lancashire, BB8 0RY
T. 01282 868686
Colne.sales@pettyreal.co.uk

www.pettyreal.co.uk