

Because life is

PettyTM
Real

47 Trent Road
Nelson
BB9 0NX



For Sale

Price £165,000

- Spacious semi detached property
- Potential to extended
- Large rear garden
- Ideal for growing family
- On the doorstep of St John's C & E School

- Lounge & living room
- Separate kitchen
- Bathroom & separate WC
- Three bedrooms
- No chain



A rare opportunity has arisen to purchase an extended semi detached dwelling in highly sought after location opposite St John's Church of England school and near to open countryside making this the perfect home for a growing family.

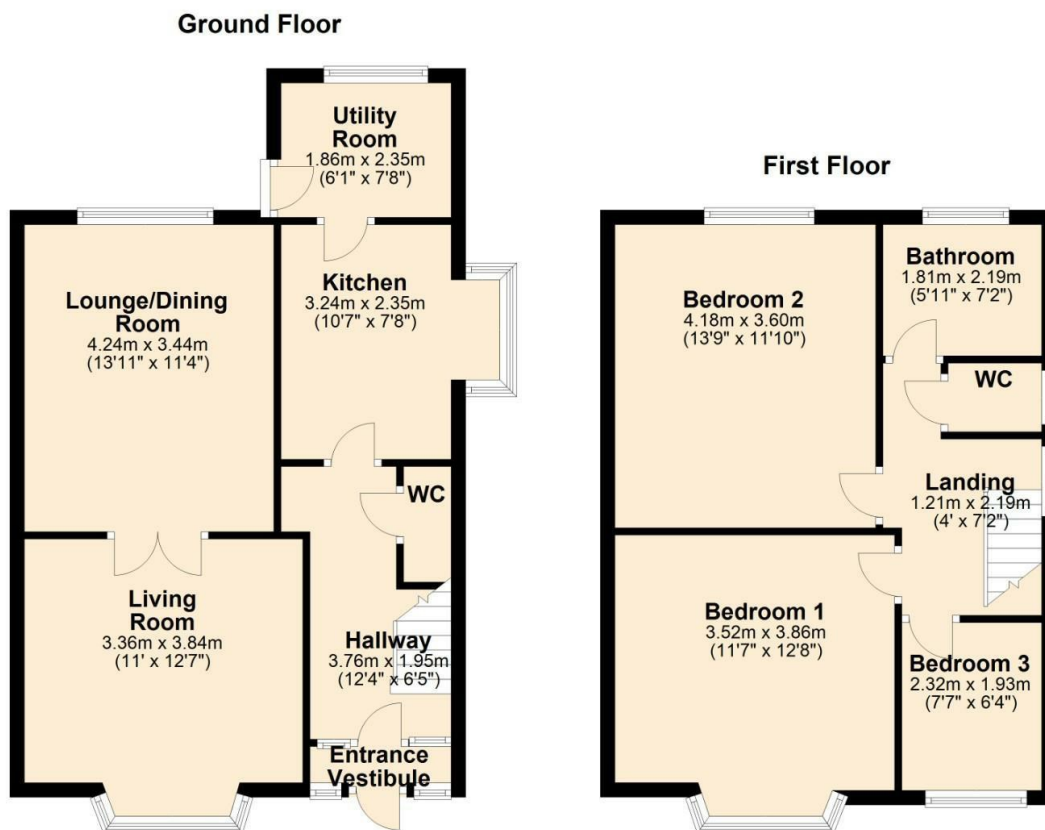
The accommodation briefly comprises on the ground floor, entrance hallway, good sized lounge with living flame gas fire with surround and bay fronted window, dining room/living room, separate w.c., kitchen houses an extensive range of matching wall, base and drawer units with complimentary work surfaces, utility room which houses the gas fired combination boiler.

To the first floor is a landing where there are three bedrooms, two of which are of double size and third single bedroom and bathroom with bath with shower over, wash basin, useful storage cupboard and separate wc.

Externally the property still has potential to be extended and boasts a sizeable garden to the rear with shed as well as off road parking, and detached garage.

The property benefits from the modern day comforts of UPVC double glazing and gas fired central heating.

No onward chain



These particulars, whilst believed to be accurate are set out as a general outline only for guidance and do not constitute any part of an offer or contract. Intending purchasers should not rely on them as statements of representation of fact, but must satisfy themselves by inspection or otherwise as to their accuracy. No person in this firm's employment has the authority to make or give any representation or warranty in respect of the property.

11 Albert Road, Colne, Lancashire, BB8 0RY
T. 01282 868686
Colne.sales@pettyreal.co.uk

www.pettyreal.co.uk