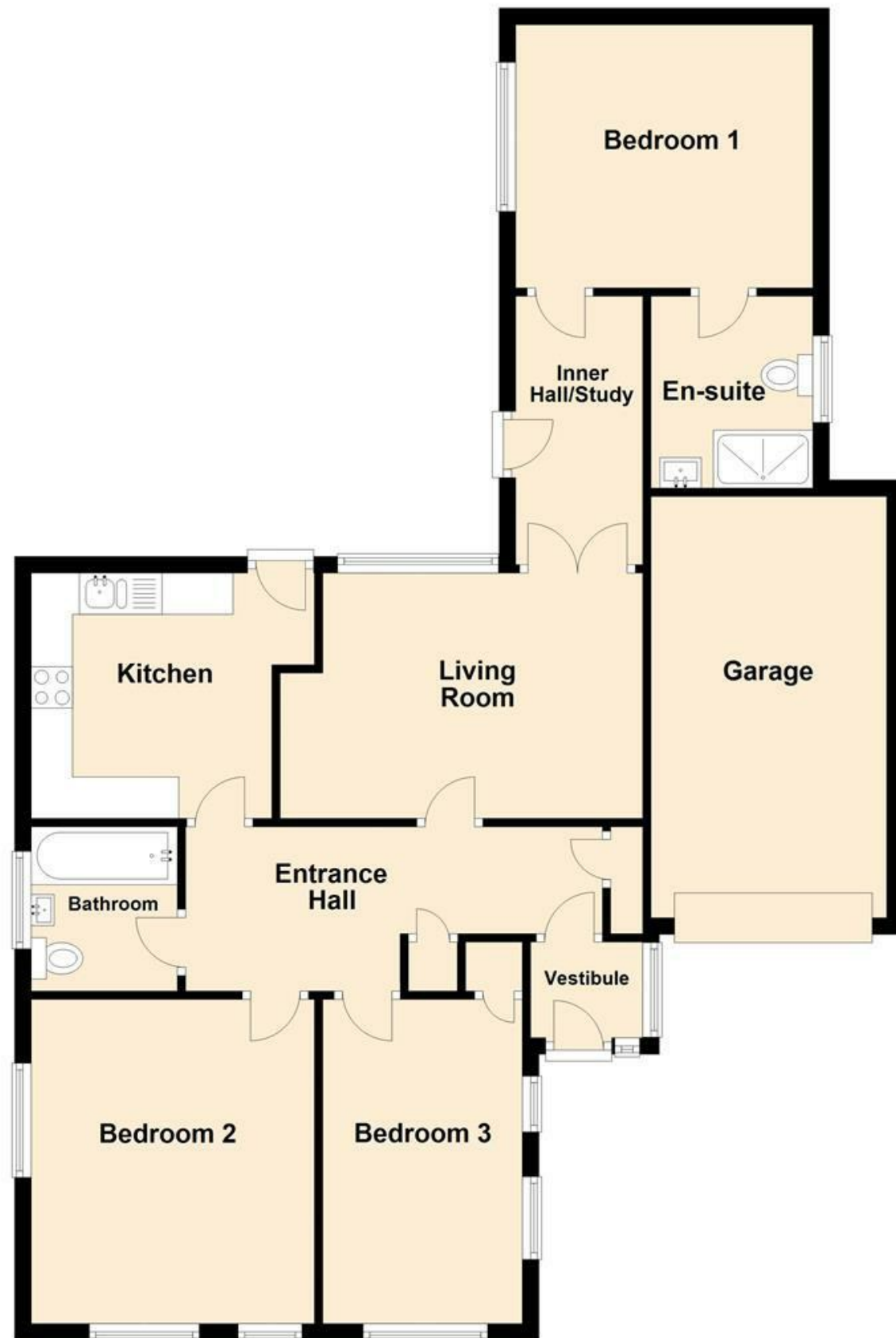


## Ground Floor



**EARLY VIEWING IS A MUST!** A very well presented DETACHED BUNGALOW situated within a highly desirable location and offering EXTENDED ACCOMMODATION. Comprising; vestibule, hallway, living room, fitted kitchen, inner hall/study, **THREE DOUBLE BEDROOMS** (master with en-suite) and family bathroom. Partially converted loft space, driveway parking, **ATTACHED GARAGE** and delightful low maintenance gardens.

8 The Quadrant, Buxton, Derbyshire, SK17 6AW  
T. 01298 23038 | | [www.wrightmarshall.co.uk](http://www.wrightmarshall.co.uk)

Buxton | Chester | Crewe | Knutsford | Nantwich | Northwich | Tarporley

MISREPRESENTATION ACT 1967.

Messrs Wright Marshall for themselves and for the vendors or Lessors of this property, whose agents they are, give notice that:

1. The particulars are set out as general outline only for the guidance of intending purchasers, and do not constitute, nor constitute part of, an offer or contract.
2. All descriptions and references to condition and necessary permissions for use and occupation, and other details are given in good faith and are believed to be correct but any intending purchasers or tenants should not rely on them as statements or representations of fact but must satisfy themselves by inspection or otherwise as to the correctness of each of them.
3. No person in the employment of Messrs. Wright Marshall has any authority to make any representation whatever in relation to this property.



EARLY VIEWING IS A MUST! A very well presented DETACHED BUNGALOW situated within a highly desirable location and offering EXTENDED ACCOMMODATION. Comprising; vestibule, hallway, living room, fitted kitchen, inner hall/study, THREE DOUBLE BEDROOMS (master with en-suite) and family bathroom. Partially converted loft space, driveway parking, ATTACHED GARAGE and delightful low maintenance gardens.

### ENTRANCE VESTIBULE

Frosted double glazed window, double glazed door, tiled flooring, cloaks hanging space.

### HALLWAY

Double glazed entrance door, wood effect flooring, two storage cupboards, access to roof void via pull down ladder (roof space partially converted to two separate rooms and a storage cupboard).



### FITTED KITCHEN

11'5 x 9'8 plus door recess (3.48m x 2.95m plus door recess) Fitted with a range of wall and base mounted units with work surfaces over and tiled splash backs, single drainer sink unit with mixer taps, fitted double oven with four ring electric hob and extractor above, fitted dishwasher, space for fridge/freezer, space for washing machine and tumble dryer, cupboard with wall mounted central heating boiler, double glazed window, frosted double glazed door and wood effect flooring.



### BEDROOM ONE

11'10 x 10'5 (3.61m x 3.18m) Double glazed window, radiator, wood effect flooring, door to;



### EN-SUITE

Double shower cubicle with shower fittings over, low level WC, vanity wash hand basin, heated towel rail, frosted double glazed window, tiled walls, tiled flooring.



### BEDROOM TWO

12'10 x 11'3 (3.91m x 3.43m) (currently used as a dining/sitting room) Three double glazed windows, radiator, wood effect flooring.



### BEDROOM THREE

12'1 x 7'11 (3.68m x 2.41m) Three double glazed windows, built in storage cupboard, radiator, wood effect flooring.



### BATHROOM

Panelled bath with shower fittings over, low level WC, vanity wash hand basin, frosted double glazed window, heated towel rail, wood effect flooring.



### EXTERNALLY

The bungalow benefits from driveway parking leading to the garage, there is also a low maintenance garden frontage.

The rear of the property offers a good sized patio leading to the main garden, low maintenance with raised borders and enclosed boundaries.

### GARAGE

With up and over door, electric power and lighting.



### LIVING ROOM

17'1 x 13'1 (5.21m x 3.99m) Double glazed window, fireplace with wooden surround, electric fire and marble effect hearth and back, wood effect flooring, glazed double doors leading to;



### INNER HALLWAY/STUDY

10'9 x 4'11 (3.28m x 1.50m) Double glazed door to outside, desk area, radiator, built in storage cupboard.