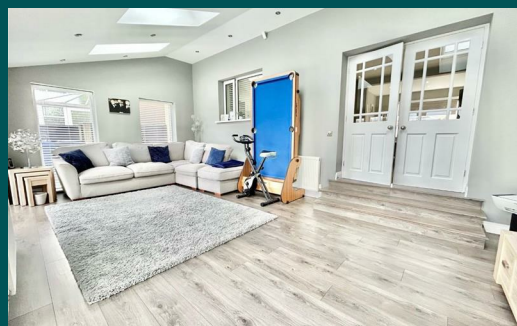


Because life is

PettyTM
Real

16 Bronte Avenue
Burnley
BB10 3HY



For Sale

£339,950

- 3 Bedrooms
- Semi Detached
- Beautifully Modernised
- Large Rear Extension
- L-Shaped Kitchen Diner

- Spacious Driveway
- Stunning Garden
- Ready To Move In
- Quiet Location
- Close To Local Transport



Welcome to your dream home! This stunning 3-bedroom semi-detached house is a true gem, offering a perfect blend of contemporary style and practicality. As you approach, the expansive driveway beckons, providing ample parking space for you and your guests.

Step inside, and the grand entrance hallway welcomes you with a feature staircase adorned with a stylish glass balustrade, setting the tone for the modern elegance that awaits. To the left, the large living room has been thoughtfully designed, with a seamless fusion of spaces through a clever knockout to create one expansive, inviting area.

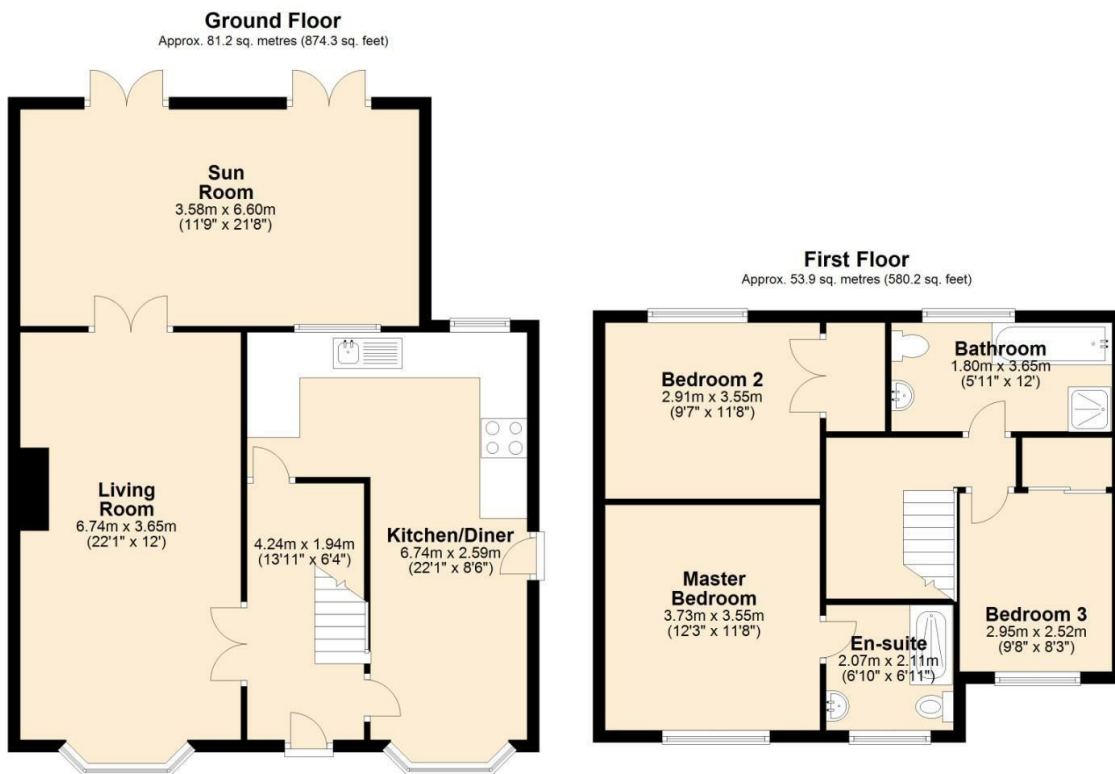
On the right, the heart of the home unfolds in the form of an L-shaped modern kitchen diner. The sleek design and ample counter space make it a perfect hub for both family meals and entertaining guests. The kitchen also benefits from a range of integrated appliances including oven, dishwasher and fridge freezer.

Venture further, and the large rear extension bathes the home in natural light, thanks to strategically placed Velux windows. Open the patio doors, and you'll find yourself in a private oasis—the back garden—a perfect retreat for relaxation and outdoor gatherings.

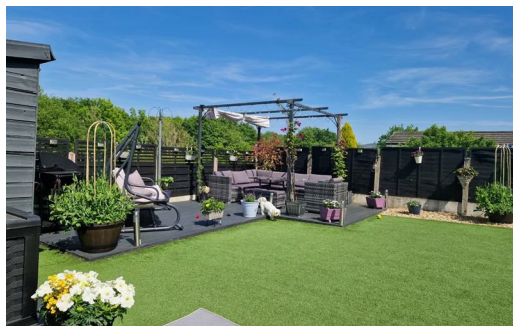
Ascending the feature staircase, the upper level reveals a spacious master bedroom that boasts an en-suite bathroom. This sanctuary offers a luxurious experience with a walk-in shower featuring a soothing rainfall shower head, complemented by a toilet and a chic vanity sink.

Two additional double bedrooms await, one at the front and the other at the back, the latter equipped with a small walk-in wardrobe space—ideal for keeping your fashion treasures organized. The shared family bathroom is a vision of modern convenience, complete with a tiled-in bath, rainfall shower with a tiled wet room floor, toilet, and a floating vanity sink.

Call today to arrange a viewing to avoid missing out!



Total area: approx. 135.1 sq. metres (1454.5 sq. feet)



These particulars, whilst believed to be accurate are set out as a general outline only for guidance and do not constitute any part of an offer or contract. Intending purchasers should not rely on them as statements of representation of fact, but must satisfy themselves by inspection or otherwise as to their accuracy. No person in this firm's employment has the authority to make or give any representation or warranty in respect of the property.

4 Manchester Road, Burnley, Lancashire, BB11 1HH

T.

burnley.sales@pettyreal.co.uk burnley.lettings@pettyreal.co.uk
property.management@pettyreal.co.uk

www.pettyreal.co.uk