

Because life is

PettyTM
Real

97 Derby Street
Colne
BB8 9AF



For Sale

Price £130,000

- Spacious end terrace
- Popular location
- Near to amenities
- Ideal for a family
- Lounge & living room

- Separate kitchen
- Modern bathroom
- 4 bedrooms including attic
- Central heating & double glazing
- No chain



Nestled in the heart of Colne, this delightful 5-bedroom terrace presents a wonderful opportunity for those seeking a comfortable and spacious home. This property boasts a warm and inviting atmosphere, with a range of appealing features.

Key Features:

Bedrooms: This property offers five generously sized bedrooms, providing ample space for a growing family or the flexibility to create a dedicated home office or hobby room.

Living Spaces: Enjoy the luxury of two separate living rooms, perfect for entertaining guests or creating distinct relaxation spaces for the family. The design allows for versatility in furniture arrangement and lifestyle needs.

Kitchen: The property features a well-appointed, separate fitted kitchen. Modern in design and equipped with the latest amenities, it provides an efficient and stylish space for culinary endeavors.

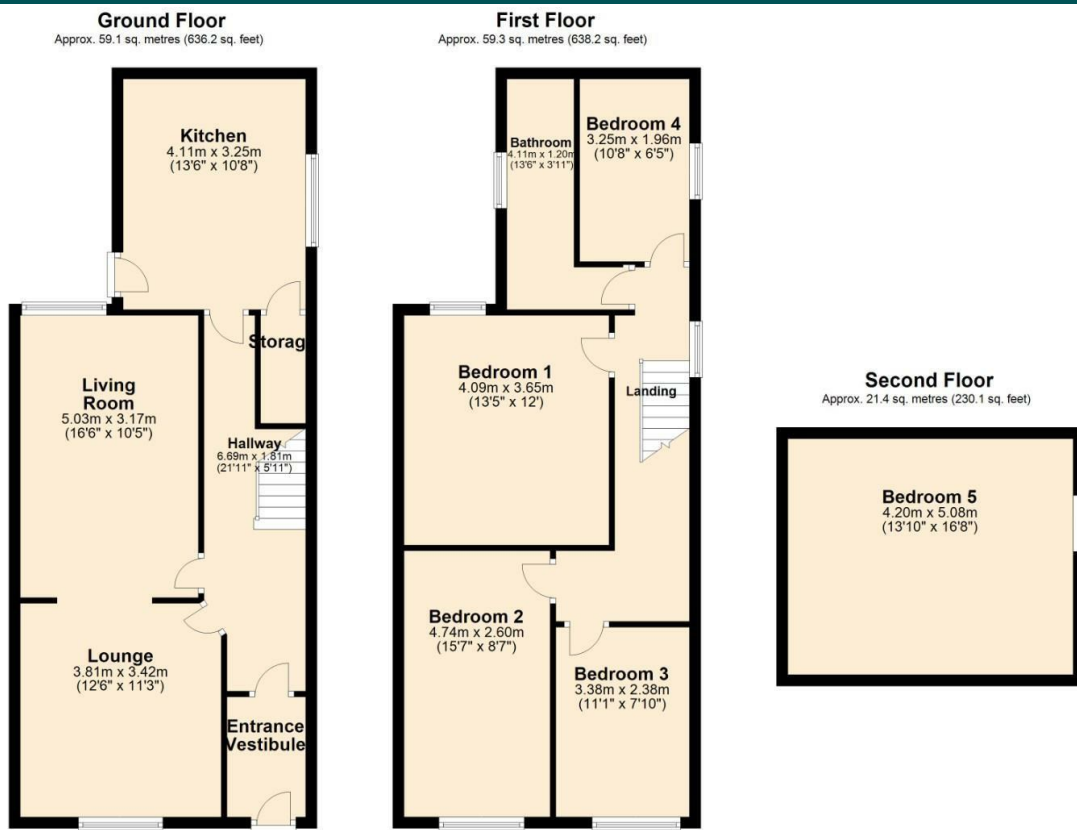
Bathroom: The modern 4-piece bathroom adds a touch of luxury to daily routines. Fitted with contemporary fixtures and finishes, it offers both style and functionality.

No Chain: This property comes with the added benefit of no chain, streamlining the buying process and ensuring a smoother transition for the new homeowners.

Location: Situated in Colne, the property enjoys a convenient location with access to local amenities, schools, and transportation links. Residents can take advantage of the town's vibrant community and nearby green spaces.

Price: Competitively priced at £140,000, this property represents excellent value for a 5-bedroom terrace.

Whether you're a first-time buyer, a growing family, or someone looking for an investment opportunity, this 5-bedroom terrace in Colne offers a comfortable and stylish living space. Don't miss the chance to make this property your new home!



Total area: approx. 139.8 sq. metres (1504.5 sq. feet)



These particulars, whilst believed to be accurate are set out as a general outline only for guidance and do not constitute any part of an offer or contract. Intending purchasers should not rely on them as statements of representation of fact, but must satisfy themselves by inspection or otherwise as to their accuracy. No person in this firm's employment has the authority to make or give any representation or warranty in respect of the property.