

Because life is

Petty
Real™

6 Garnett Street
Barrowford
Nelson
BB9 8PA



For Sale

£114,950

- 2 bedroom mid terrace home
- attic
- gas fired central heating
- double glazing
- yard to rear

- walking distance of Barrowford centre
- close to bars bistros and boutiques
- close to M65 motorway



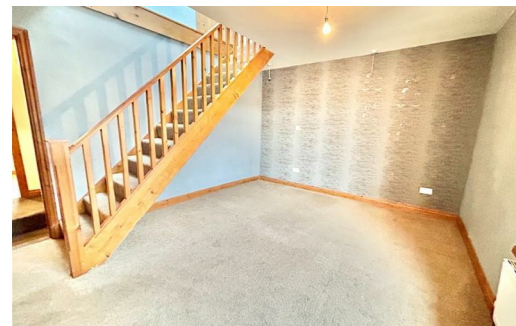
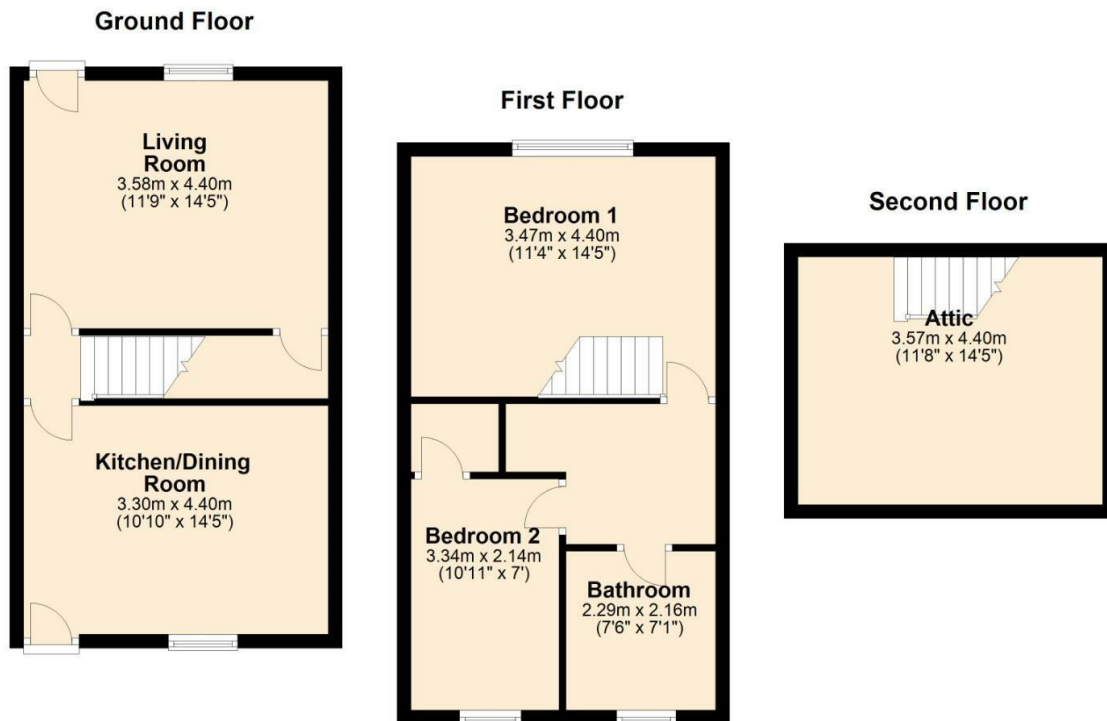
This is a great 2 bedroom mid terrace home situated in a level location and within walking distance of all the bars bistros and boutiques that Barrowford has to offer and only 5 minutes from the M65 motorway which connects into the national motorway system

For the sporting enthusiast Seedhill cricket ground and athletics track, Bull Holme and Swinden playing fields, Steven Burke cycle track, and pump track are all within walking distance. And Pendle Hill is on the doorstep

the accommodation is arranged over 2 floors and briefly comprises of Living Room and Dining Kitchen on the ground floor and 2 bedrooms and bathroom on the first floor. The attic provides flexible space for the occasional visitor or base to work from home. benefitting from gas-fired central heating and double-glazing

Externally the property has a yard to the rear

This is an ideal purchase



These particulars, whilst believed to be accurate are set out as a general outline only for guidance and do not constitute any part of an offer or contract. Intending purchasers should not rely on them as statements of representation of fact, but must satisfy themselves by inspection or otherwise as to their accuracy. No person in this firms employment has the authority to make or give any representation or warranty in respect of the property.

134 Gisburn Road, Barrowford, Lancashire, BB9 6HQ
T. 01282 615900
Barrowford.sales@pettyreal.co.uk

www.pettyreal.co.uk