

Because life is

Petty<sup>TM</sup>  
Real

20 Jubilee Street  
Briercliffe  
Burnley  
BB10 2JD



For Sale

Asking Price £199,950

- Huge, End Terrace
- Three Double Bedrooms
- En-Suite
- Two Reception Rooms
- Kitchen/Diner With a Bay Window

- Leasehold
- Extension To The Side
- Off Road Parking
- Rented Garden
- Utility & Downstairs WC



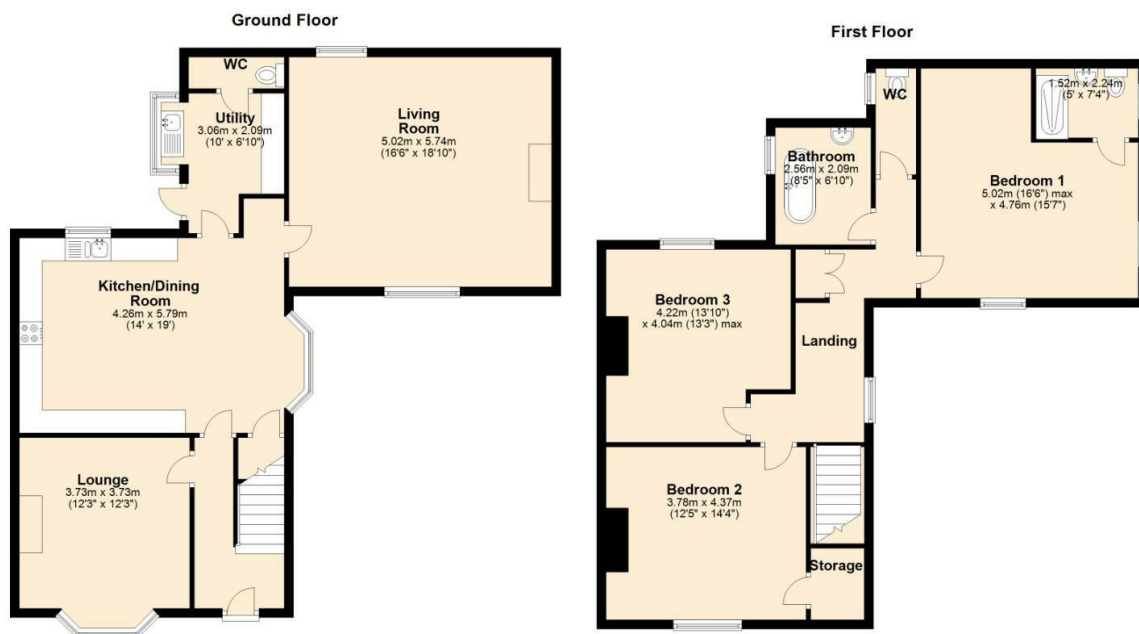


This charming stone-built, 3-bedroom end terrace on Jubilee Street in Briercliffe/Harle Syke sits proudly in an elevated position, offering a delightful combination of character and modern amenities. The location is convenient, being close to local schools, bus stops, and picturesque woodland walks.

Entering through the hallway, the front lounge welcomes you with the warmth of an open fire and a bay window, creating a cozy and inviting atmosphere. The kitchen/diner, arranged in a practical horseshoe layout, features white units and is equipped with an electric oven, hob, fridge, freezer, and dishwasher. The bay window in the kitchen/diner overlooks the front garden, adding a touch of brightness to the space. To the rear, a utility area with a sink/drainage set in a bay window and plumbing for a washing machine provides practicality. A downstairs WC, housing the boiler. The property boasts a spacious living room with abundant natural light from several windows. Original plasterwork on the ceiling adds character, and a gas fire with a stone surround creates a focal point in this generously sized living space.

Upstairs, three double bedrooms await, with the main bedroom benefiting from a recently fitted en-suite featuring a walk-in shower, pedestal hand wash basin, and a low-level WC. The WC and bathroom are separate, with the bathroom offering a touch of luxury with a slipper bath and a pedestal hand wash basin.

Externally, the property features a garden to the front and side, enhancing its curb appeal. The rear garden includes a gated driveway, providing convenient off-road parking. Additionally, there is a garden area that is rented for a fee through the council, expanding the outdoor space and offering further opportunities for greenery and relaxation. This stone-built end-terrace on Jubilee Street encapsulates a perfect blend of traditional charm and modern living.



These particulars, whilst believed to be accurate are set out as a general outline only for guidance and do not constitute any part of an offer or contract. Intending purchasers should not rely on them as statements of representation of fact, but must satisfy themselves by inspection or otherwise as to their accuracy. No person in this firm's employment has the authority to make or give any representation or warranty in respect of the property.

4 Manchester Road, Burnley, Lancashire, BB11 1HH

T.

[Burnley.sales@pettyreal.co.uk](mailto:Burnley.sales@pettyreal.co.uk) [burnley.lettings@pettyreal.co.uk](mailto:burnley.lettings@pettyreal.co.uk)  
[property.management@pettyreal.co.uk](mailto:property.management@pettyreal.co.uk)

[www.pettyreal.co.uk](http://www.pettyreal.co.uk)