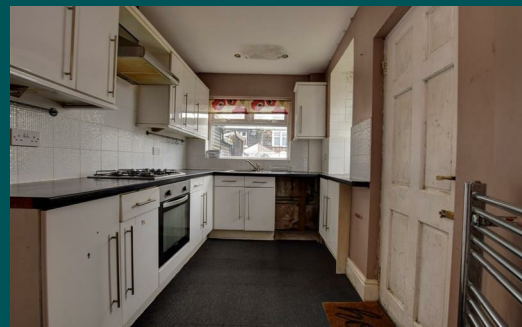


Because life is

Petty  
Real™

108 Waidshouse Road  
Nelson  
BB9 0RS



For Sale

Chain Free £125,000

- Spacious semi detached dwelling
- Near to the town centre
- Ideal family home
- Lounge
- Living room

- Separate kitchen
- 3 Bedrooms
- Three piece bathroom
- Garden to the rear
- No chain



A spacious three bedroomed semi-detached home makes an ideal purchase for young and growing families and first time buyer to gain a foothold on the property ladder.

Infused with light, this super home enjoys a well balanced arrangement of accommodation. Approached from the front hallway with the lounge has a feature bay window, 2nd larger reception room located to the rear. The kitchen houses an extensive range of fitted wall and base units, oven, hob and UPVC door leading to rear garden.

On the first floor landing. There are two double bedrooms. The family bathroom houses a three piece suite consisting of a low level wc, pedestal hand wash basin and a paneled bath with mixer shower over. Accessed from the landing is an attic third bedroom.

Externally to the front the garden is garden forecourt. To the rear is a large rear garden with patio & lawn areas and timber shed.

The property benefits from the modern day comforts of UPVC double glazing and gas fired central heating.

No chain

waidshouse road



Approx. Gross Internal Floor Area 1085 sq. ft / 101.03 sq. m

Illustration for identification purposes only, measurements are approximate, not to scale.

Produced by Elements Property



These particulars, whilst believed to be accurate are set out as a general outline only for guidance and do not constitute any part of an offer or contract. Intending purchasers should not rely on them as statements of representation of fact, but must satisfy themselves by inspection or otherwise as to their accuracy. No person in this firm's employment has the authority to make or give any representation or warranty in respect of the property.

11 Albert Road, Colne, Lancashire, BB8 0RY  
T. 01282 868686  
Colne.sales@pettyreal.co.uk

[www.pettyreal.co.uk](http://www.pettyreal.co.uk)