

Because life is

Petty
Real™

164 Keighley Road
Colne
BB8 0PJ



For Sale

£325,000

- Stunning bay fronted mid terrace
- Sought after location
- Overlooking Colne cricket club
- Ideal for growing family
- Hallway, two receptions

- Modern separate kitchen
- Basement with with studio, playroom, store & loolity
- 4 Double bedrooms
- Modern four piece bathroom
- Courtyard garden to the rear



Located in an established and sought after area of Colne this stunning bay fronted mid terrace dwelling offers extensive living accommodation arranged over four floors and presents an ideal purchase for growing families. To the rear the property boasts extensive views towards Boulsworth and the surrounding countryside.

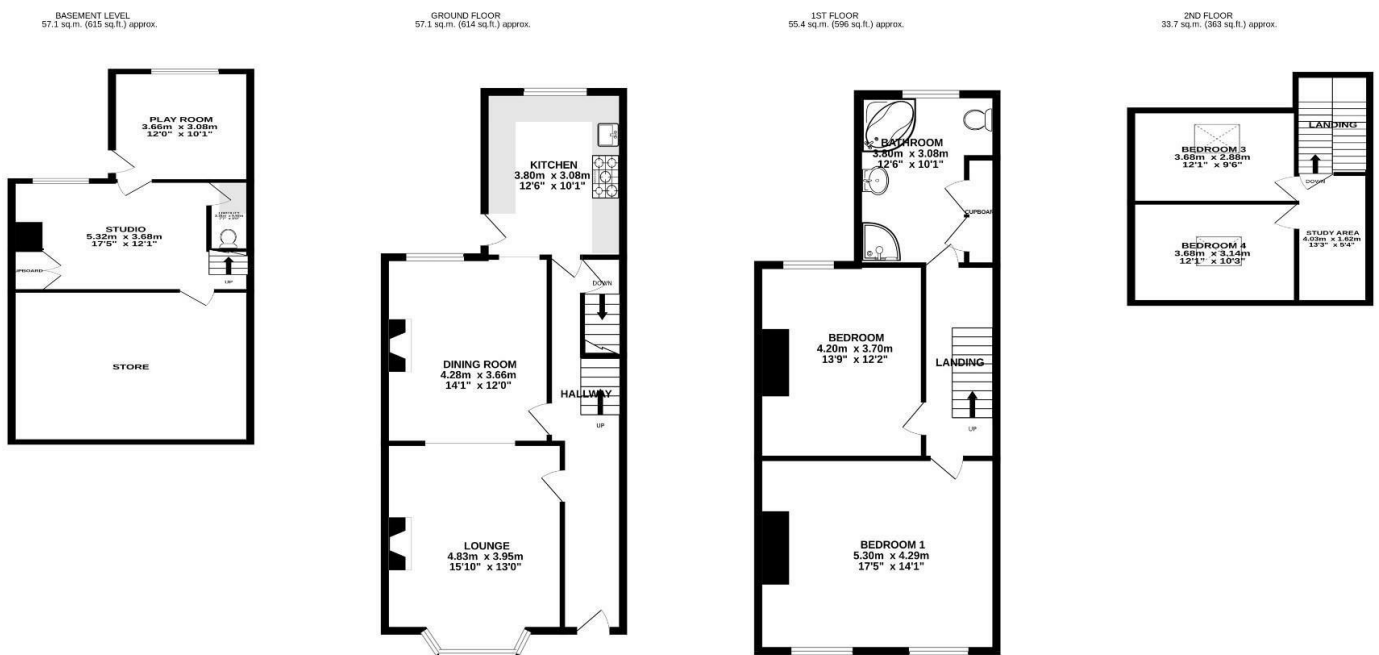
The accommodation comprises on the ground floor an entrance hallway, good sized lounge with bay fronted window and feature multi fuel stove The lounge is open to a dining room which has ornate fireplace and views to the rear. Kitchen offers an excellent range of fitted wall and base units with solid oak work tops, solid oak flooring, tiled splash backs, Belfast sink with chrome mixer tap, integrated fridge / freezer, leisure cook master range oven, 5 ring gas hob, air extraction fan, and UPVC door leading out to the rear courtyard.

To the lower ground floor is a spacious office/study which is a useful space and has a feature fireplace and fitted storage cupboard. Useful loottiity which has fitted base units with solid beech worktops, tiled flooring, plumbing for a washing machine and electrics for a tumble dryer, Belfast sink and a push button w.c There is another flexible room which is used as play room and further large store room.

To the first floor is a spacious landing, there are two double bedrooms the master bedroom overlooks Colne cricket cub and the rear bedroom has views towards Boulsworth hill. The bathroom houses a modern piece suite which comprises, corner shower with rainfall shower head, pedestal sink, low level w.c, heated chrome towel rack,, paneled bath, linen cupboard housing another central heating radiator. On the 2nd floor is a useful study area, two further double bedrooms.

Externally to the front elevation is a garden forecourt. To the rear is a generous terracotta tiled courtyard with space for outdoor furniture, an elevated decked area with freestanding Belfast sink.

Viewing recommended!



TOTAL FLOOR AREA : 203.2 sq.m. (2188 sq.ft.) approx.

Whilst every attempt has been made to ensure the accuracy of the floorplan contained here, measurements of doors, windows, rooms and any other items are approximate and no responsibility is taken for any error, omission or mis-statement. This plan is for illustrative purposes only and should be used as such by any prospective purchaser. The services, systems and appliances shown have not been tested and no guarantee as to their operability or efficiency can be given.
Made with Metropix ©2023



These particulars, whilst believed to be accurate are set out as a general outline only for guidance and do not constitute any part of an offer or contract. Intending purchasers should not rely on them as statements of representation of fact, but must satisfy themselves by inspection or otherwise as to their accuracy. No person in this firms employment has the authority to make or give any representation or warranty in respect of the property.

11 Albert Road, Colne, Lancashire, BB8 0RY
T. 01282 868686
Colne.sales@pettyreal.co.uk

www.pettyreal.co.uk