

Because life is

PettyTM
Real

10 Linden House
Colne
BB8 9BA



For Sale

Price **£110,000**

- Stunning development of 1 & 2 bed apartments
- Dishwasher included
- EPC Rating C
- Expertly designed apartments
- Modern open plan entertaining space

- Kitchen with integrated appliances
- Contemporary shower room
- Floor coverings included throughout
- Aluminum double glazing and electric heating
- Demarcated parking space



LINDEN HOUSE APARTMENTS, COLNE

NOW READY TO MOVE IN TO

PROPERTY INCLUSIVE OF DISHWASHER

Barnfield Homes are breathing new life into what is set to become one of Pendle's most stylish new addresses.

Consisting of twenty expertly designed, spacious 1 & 2 bedroom apartments, Linden House is a town centre haven. The three storey stone built development is perfectly located close to local shops, bars and restaurants, together with large retailers such as Asda, Sainsburys TK Maxx, Aldi, Lidl and Matalan.

Sleek and stylish, each apartment has a modern kitchen and entertaining space. The contemporary open-plan living space offers the perfect environment to relax and spend time with friends and family.

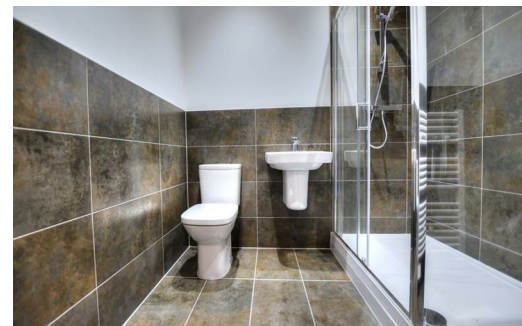
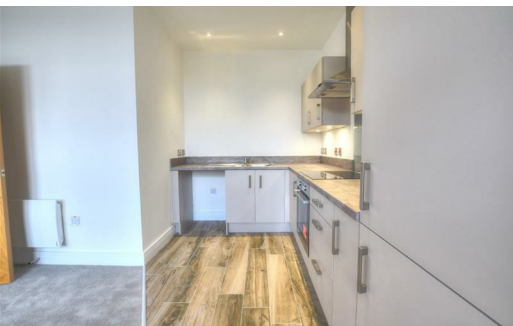
Typical Specification

General

- Aluminum double glazed windows
- Aluminum exterior doors
- Energy saving cavity walls and roof insulation
- Smooth plastered walls and ceilings throughout
- Walls and woodwork painted throughout
- Flush American oak interior doors

Mechanical & Electrical

- TV point in lounge and all bedrooms



These particulars, whilst believed to be accurate are set out as a general outline only for guidance and do not constitute any part of an offer or contract. Intending purchasers should not rely on them as statements of representation of fact, but must satisfy themselves by inspection or otherwise as to their accuracy. No person in this firm's employment has the authority to make or give any representation or warranty in respect of the property.

11 Albert Road, Colne, Lancashire, BB8 0RY
T. 01282 868686
Colne.sales@pettyreal.co.uk

www.pettyreal.co.uk