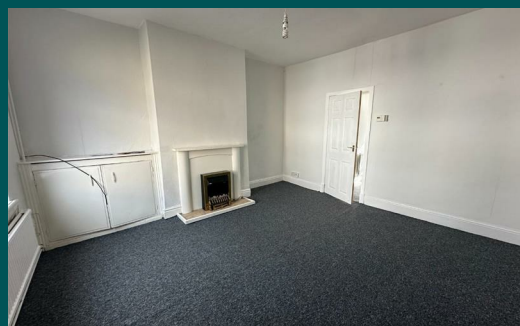


Because life is

Petty
Real™

25 Westmoreland Street
Nelson
BB9 7HU



For Sale

£70,000

- Stone built terrace
- Popular location
- Ideal for first time buyer
- Lounge
- Fitted kitchen

- Two bedrooms
- Bathroom
- Rear yard
- Central heating & double glazing
- No chain



Conveniently positioned to access local amenities and public transportation networks, this charming mid-terrace abode presents an excellent opportunity for first-time buyers embarking on their homeownership journey or savvy investors seeking a promising addition to their portfolio.

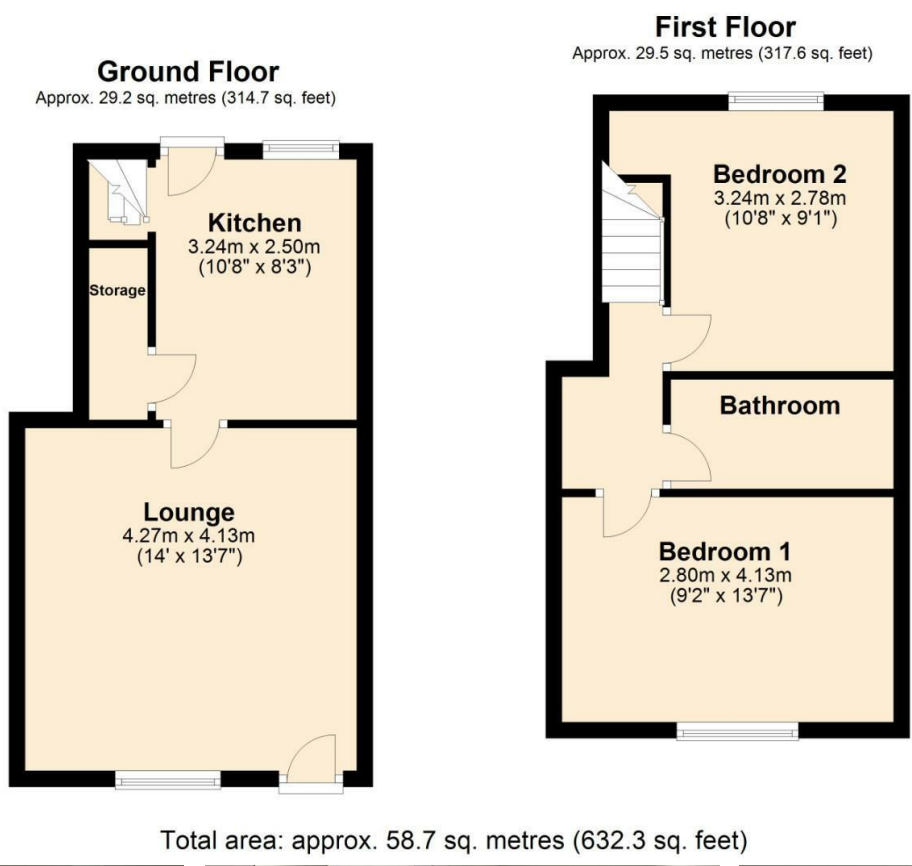
The ground floor graciously welcomes you with a spacious lounge seamlessly flowing into a well-appointed dining kitchen, offering an ideal space for both relaxation and culinary endeavors. Ascend to the first floor to discover two inviting bedrooms and a three-piece bathroom suite.

Externally to the rear is an enclosed yard.

Enhanced with UPVC double glazing and gas fired central heating the property ensures energy efficiency and a cozy atmosphere throughout the seasons.

Early viewing is highly recommended to fully appreciate the potential and appeal of this delightful residence.

No chain



These particulars, whilst believed to be accurate are set out as a general outline only for guidance and do not constitute any part of an offer or contract. Intending purchasers should not rely on them as statements of representation of fact, but must satisfy themselves by inspection or otherwise as to their accuracy. No person in this firm's employment has the authority to make or give any representation or warranty in respect of the property.

11 Albert Road, Colne, Lancashire, BB8 0RY
T. 01282 868686
Colne.sales@pettyreal.co.uk

www.pettyreal.co.uk