



3 CAMBRIAN VILLAS

Whitchurch Road, Milton Green

Rickitt
Partnership

1930's semi detached home

Semi detached house ♦ Two bedrooms ♦ Sitting room & kitchen ♦ Off road parking to front ♦ Garage & garden to rear ♦ Views across countryside at rear ♦ NO CHAIN ♦ EPC F

Description

A pleasant two bedroomed 1930's semi detached house with views across countryside at the rear. The property briefly comprises kitchen and sitting room with two bedrooms and a bathroom upstairs. There is off road parking to the front, with a lawned garden to rear, with views across the countryside.

Entrance Hall

Double glazed frosted window to front. Staircase to first floor. Radiator.

Kitchen

Range of base and wall units with granite effect work surface above and stainless steel sink unit with mixer tap. Four ring electric hob with exterior fan above. Built in electric oven. Space for washing machine. Tiled splash back. Space for fridge. Double glazed window to side. Part double glazed frosted door to rear. Tiled floor. Radiator. Under stairs cupboard with double glazed frosted window to side and housing oil fired boiler.

Sitting Room

Double glazed bay window to front. Electric fire with marble surround and hearth. Double glazed window to rear. Two radiators.

First Floor Landing

Access to loft.





Bedroom One

Double glazed window to front. Radiator.

Bedroom Two

Double glazed window to rear. Radiator.

Bathroom

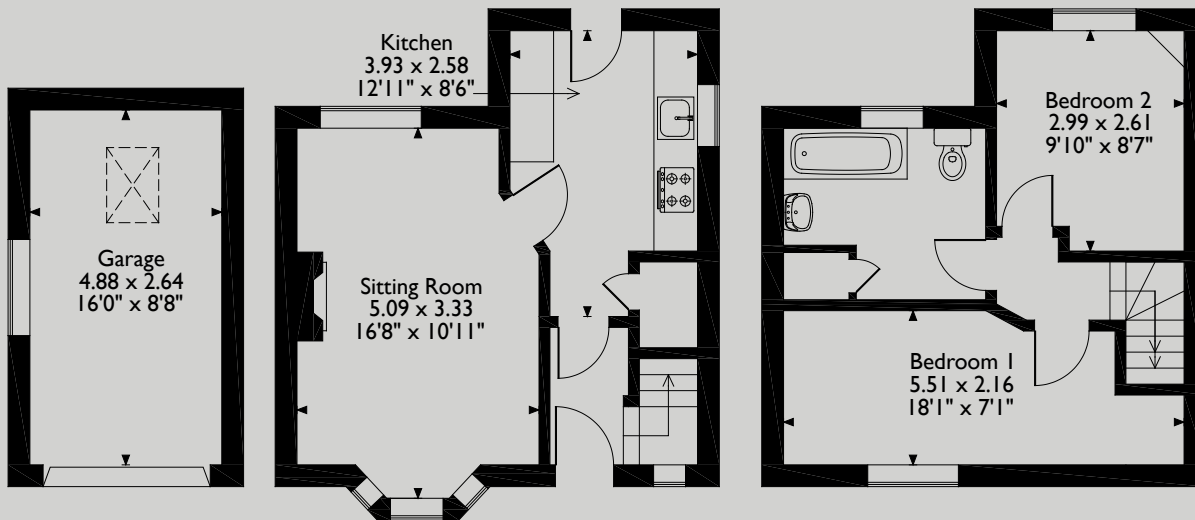
Bath, low level WC and hand wash basin. Part tiled walls. Cupboard housing hot water cylinder. Double glazed frosted window to rear. Radiator.

Outside

There is a large brick paved area at the front of the house, offering off road parking for several vehicles. There is shared access to the side leading to a single detached garage. To the rear, there is a paved terrace area and gravelled area with pathway leading to the garden. The garden mainly laid to lawn with views across the countryside.



Approximate Gross Internal Area
Main House = 59 Sq M/635 Sq Ft
Garage = 13 Sq M/140 Sq Ft
Total = 72 Sq M/775 Sq Ft



Ground Floor

First Floor

Please note that the location of doors, windows and other items are approximate and this floorplan is to be used for illustrative purposes only. Unauthorized reproduction is prohibited.



Tel: 01244 322 322
info@rickittpartnership.co.uk

Tel: 020 7839 0888
www.rickittpartnership.co.uk

Rickitt Partnership gives notice that these particulars do not constitute an offer or contract or part thereof. All descriptions, photographs and plans are for guidance only and should not be relied upon as statements or representations of fact. All measurements are approximate and not necessarily to scale. We have not tested any apparatus, equipment, fixtures or services and it is in the buyers interest to check the working condition of any appliances. Where any EPC is held for this property, it is available for inspection at the Chester office by appointment. Any prospective purchaser must satisfy themselves of the correctness of the information within the particulars by inspection or otherwise. Rickitt Partnership does not have any authority to give any representations or warranties whatsoever in relation to this property (including but not limited to planning/building regulations), nor can it enter into any contract on behalf of the vendor. Rickitt Partnership does not accept responsibility for any expenses incurred by prospective purchasers in inspecting properties which have been sold, let or withdrawn.