

20 West Street, Boston, PE21 8QH

£600 pcm

Are you looking for a prime commercial space in the heart of Boston?
Look no further! We have an incredible opportunity for you at West Street.

Lease Hold: Medium | Open Plan Floor Area | Spacious Kitchen | High Footfall |

01205356380
boston@plotway.co.uk

Plotway

West Street, Boston, Lincolnshire PE21 8QH

Features:

- Prime location in a bustling area
- High foot traffic and visibility
- Spacious layout with ample room for customization
- Flexible lease terms
- Proximity to major transportation hubs and amenities

This commercial shop is perfect for:

- Retail businesses
- Cafes and restaurants
- Offices and professional services

Don't miss out on this fantastic opportunity to establish your business in one of Boston's most sought-after locations. Contact us now to schedule a viewing and secure this space for your venture!

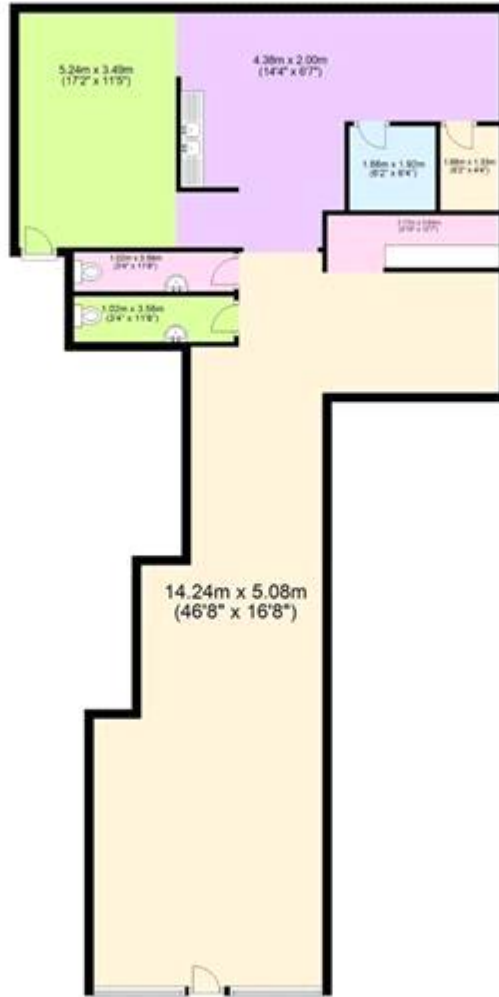
Deposit: £1,800

Room

w: 5m x l: 14.3m (w: 16' 5" x l: 46' 11")

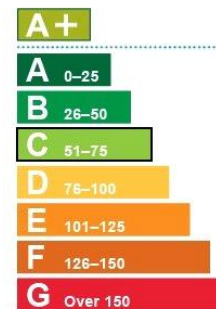
A spacious shop floor with the potential of being used for a restaurant, cafe or bar.

Ground Floor



Energy Performance Asset Rating

More energy efficient



64 This is how energy efficient the building is.

Less energy efficient

Whilst every effort is made to ensure the accuracy of these details, it should be noted that the measurements are approximate only. Floorplans are for representation purposes only and prepared according to the RICS Code of Measuring Practice by our floorplan provider. Therefore, the layout of doors, windows and rooms are approximate and should be regarded as such by any prospective tenant.