



# Fennells, Harlow

£300,000 Freehold

3 bedroom end terraced house for sale

## Description

**\*\*Guide price £300,000 - £325,000\*\*** For sale by way of a conditional sale.\* Jukes Estate Agents Harlow are delighted to bring to market this 3 bedroom end of terrace family home in Fennells Harlow.

This large 3 bedroom family home whilst in need of a little cosmetic attention is in good condition throughout. The ground floor consists of a very large lounge (over 26 m<sup>2</sup> or 287 sq ft). A Kitchen / Diner & a cloakroom.

The Lounge has a door that leads into the rear garden and double patio doors that also lead into the rear garden. It really is a super size family space!

The kitchen / diner is fully fitted and comes with a 'range' style 4 compartment oven and 7 ring gas hob. There is a large window that overlooks the front garden.

In the hallway there is a cloakroom with a WC & hand basin. There is also a large storage cupboard. The entire ground floor has laminate flooring.

The front garden is a nice size and is laid mainly to lawn & is low maintenance. The rear garden is also extremely low maintenance. It has a decked area and a large garden shed. It isn't particularly overlooked and it backs onto scrubland.

Upstairs there are three bedrooms and the family bathroom. Bedroom 1 is a good size double Bedroom 2 is a decent size double and has a small but extremely handy walk in wardrobe. Bedroom 3 is a small double / decent size single. All bedrooms have large



windows Bedroom 1 overlooks the front of the property while Bedrooms 2 & 3 over the rear garden. The Bathroom has a bathtub, WC & wash basin.

Geographically this property is close to important local amenities.

Primary School (Ofsted rated good) 0.41 miles.

Secondary School (Ofsted rated good) 0.64 miles.

Harlow Town Train Station 2.62 miles.

Epping Tube Station 3.67 miles.

Princess Alexander Hospital 1.93 miles.

Harlow Town Centre 1.6 miles.

GP Surgery 0.59 miles.

Dentist 0.59 miles.

Ultrafast broadband is available

All major mobile networks have excellent signal

Air pollution is 2 where 1 is the best & 10 is the worst.

Carbon footprint 112 gCO<sub>2</sub>/kWh.

Harlow is an excellent place to live: Nestled in the heart of Essex, Harlow stands as a testament to the evolution of urban planning and community living. With its unique blend of green spaces, modern architecture, and vibrant neighborhoods, Harlow offers residents a fulfilling lifestyle that seamlessly integrates nature with urban convenience. From its inception as a post-war new town to its current status as a thriving hub, Harlow continues to captivate both residents and visitors alike with its charm and character.

### A Brief History:

Harlow's story begins in the aftermath of World War II when the British government launched an ambitious plan to alleviate housing shortages in London. Designed as one of the country's first post-war new towns, Harlow was envisioned as a beacon of modernity and innovation. The renowned architect Sir Frederick Gibberd was tasked with shaping its landscape, resulting in a meticulously planned town that prioritized community welfare and architectural

excellence.

### Community Spirit and Connectivity:

At the heart of Harlow lies a strong sense of community spirit that permeates every aspect of daily life. Residents often come together to celebrate cultural festivals, organize community events, and support local initiatives. From the bustling streets of the town center to the tranquil parks and recreational spaces, there's always a palpable sense of camaraderie among Harlow's diverse population.

One of the town's most notable features is its extensive network of cycle paths and pedestrian walkways, which not only promote sustainable transportation but also foster a deeper sense of connectivity among residents. Whether it's a leisurely stroll along the River Stort Navigation or a bike ride through the expansive Harlow Town Park, these pathways serve as arteries that keep the community connected and engaged.

### Cultural Diversity and Creativity:

Harlow prides itself on its rich cultural tapestry, with residents hailing from various backgrounds and nationalities. This diversity is celebrated through a myriad of cultural events, art exhibitions, and performances that showcase the town's creative spirit. The Gibberd Gallery, named after the town's architect, serves as a hub for artistic expression, featuring works by local and international artists alike.

Moreover, Harlow's thriving music and theater scene adds another layer of vibrancy to its cultural landscape. The Playhouse Theatre, located in the heart of the town, hosts a diverse array of performances ranging from classic plays to contemporary productions, catering to audiences of all ages and interests.

Additionally, the Harlow Art Trust's impressive outdoor sculpture collection adds an element of visual intrigue to the town's public spaces, inviting residents to engage with art in their everyday lives.

### Green Spaces and Sustainability:

Despite its urban setting, Harlow places a strong emphasis on preserving its natural environment and promoting sustainability. The town boasts over 100 hectares of green spaces, including parks, nature reserves, and landscaped gardens, providing residents with ample opportunities to connect with nature and enjoy outdoor activities.

Harlow's commitment to sustainability is further evidenced by its eco-friendly initiatives, such as renewable energy projects, recycling programs, and efforts to reduce carbon emissions. The town's dedication to environmental stewardship not only enhances its aesthetic appeal but also ensures a high quality of life for current and future generations.

### Conclusion:

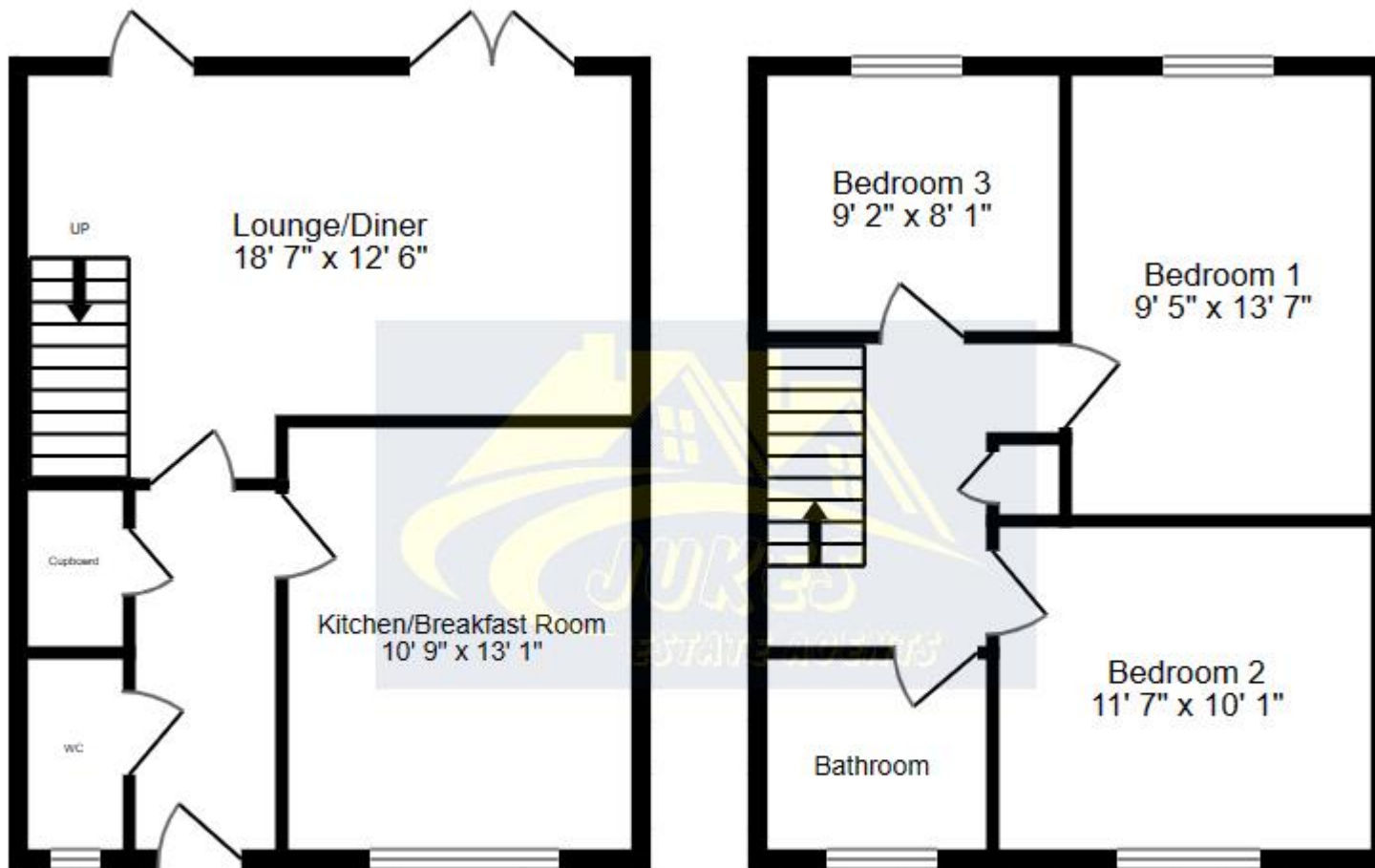
In essence, living in Harlow is more than just residing in a town; it's about embracing a way of life that prioritizes community, connectivity, and creativity. From its rich history and cultural diversity to its abundant green spaces and sustainable practices, Harlow offers residents a harmonious blend of urban convenience and natural beauty. As the town continues to evolve and flourish, its enduring spirit of innovation and inclusivity serves as a testament to the power of community-driven development.

\* Conditional sale: A reservation fee of 1% + VAT is payable on acceptance of an offer and should be considered when making an offer. For full details please call the office.

Tenure: Freehold

**Tenure**

Freehold



Whilst every attempt has been made to ensure the accuracy of the floor plan contained here, measurements of doors, windows, rooms and any other items are approximate and no responsibility is taken for any error, omission, or mis-statement. This plan is for illustrative purposes only and should be used as such by any prospective purchaser. The services, systems and appliances shown have not been tested and no guarantee as to their operability or efficiency can be given



Viewing by appointment only  
LGT Estate Agents T/A Jukes Estate Agents - Head Office  
Jukes Estate Agents, Harlow Enterprise Hub, Kao Hockham Building, Harlow, Essex CM20 2NQ  
Tel: 01279 295524 Email: [info@jukesstates.co.uk](mailto:info@jukesstates.co.uk) Website: <https://jukesstates.co.uk/>

