



This **FIVE BEDROOM DETACHED** home on the outskirts of Buxton boasts spacious living accommodation set within a generous plot, complete with an **ADJOINING FIELD**. The layout comprises a large living room, a fitted kitchen opening to a dining room, a handy study, a practical utility room, and a ground floor shower room. Upstairs, you'll find five generously proportioned double bedrooms and a family bathroom. Outside, there's a sizable lawned garden, a patio area, off road parking, and an adjoining field.

8 The Quadrant, Buxton, Derbyshire, SK17 6AW
T. 01298 23038 | | www.wrightmarshall.co.uk

Buxton | Chester | Crewe | Knutsford | Nantwich | Northwich | Tarporley

MISREPRESENTATION ACT 1967.

Messrs Wright Marshall for themselves and for the vendors or Lessors of this property, whose agents they are, give notice that:

1. The particulars are set out as general outline only for the guidance of intending purchasers, and do not constitute, nor constitute part of, an offer or contract.
2. All descriptions and references to condition and necessary permissions for use and occupation, and other details are given in good faith and are believed to be correct but any intending purchasers or tenants should not rely on them as statements or representations of fact but must satisfy themselves by inspection or otherwise as to the correctness of each of them.
3. No person in the employment of Messrs. Wright Marshall has any authority to make any representation whatever in relation to this property.

This FIVE BEDROOM DETACHED home on the outskirts of Buxton boasts spacious living accommodation set within a generous plot, complete with an ADJOINING FIELD. The layout comprises a large living room, a fitted kitchen opening to a dining room, a handy study, a practical utility room, and a ground floor shower room. Upstairs, you'll find five generously proportioned double bedrooms and a family bathroom. Outside, there's a sizable lawned garden, a patio area, off road parking, and an adjoining field.

HALLWAY

Timber door, timber framed double glazed window, under stairs storage cupboard, radiator, tiled flooring, and stairs to the first floor.

LIVING ROOM

12'6 x 17'5 (3.81m x 5.31m)
Three windows, and wood effect flooring.

KITCHEN

12'6 x 12'4 (3.81m x 3.76m)
Timber framed window, a range of fitted wall and base units, space for a range cooker, stainless steel sink and drainer with a mixer tap over, space for a fridge and freezer, tiled flooring and open to the Dining Room

DINING ROOM

11'7 x 11'10 (3.53m x 3.61m)
x2 timber framed double glazed window, radiator and wood effect flooring.



STUDY

10'01 x 11'09 (3.07m x 3.58m)
Timber framed double glazed window and a radiator.



UTILITY ROOM

10'01 x 6'08 (maximum) (3.07m x 2.03m (maximum))
Timber framed double glazed window, fitted units to the base and eye level, stainless steel and drainer with a chrome mixer tap over, plumbing for a washing machine, radiator and tiled flooring.

SHOWER ROOM

10'01 x 5'0 (3.07m x 1.52m)
Timber framed double glazed window, walk in shower cubicle with a chrome shower fitment over, WC with a push flush, wash basin with chrome taps over, chrome ladder style radiator and tiled walls and flooring.

FIRST FLOOR LANDING

Timber framed double glazed window.

BEDROOM ONE

12'01 x 14 (3.68m x 4.27m)
x3 timber framed double glazed windows and a radiator



BEDROOM TWO

13'02 x 12'05 (maximum) (4.01m x 3.78m (maximum))
Timber framed double glazed window and a radiator.



BEDROOM THREE

12'09 x 12'0 (3.89m x 3.66m)
Timber framed double glazed window and a radiator.



BEDROOM FOUR

10'02 x 12'0 (3.10m x 3.66m)
Timber framed double glazed window and a radiator.



BEDROOM FIVE

10'02 x 11'09 (3.10m x 3.58m)
Timber framed double glazed window and a radiator.

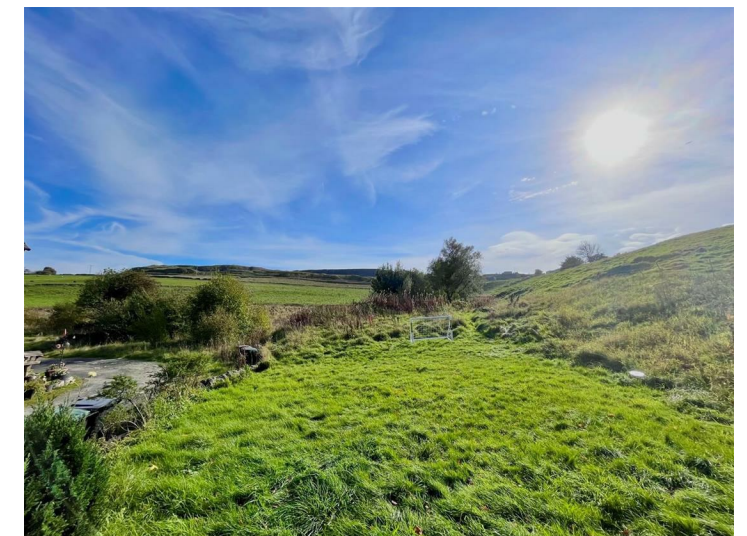
BATHROOM

8'05 x 7'03 (2.57m x 2.21m)
Bath with chrome taps over, walk in shower cubicle with a chrome shower fitment over, WC, wash basin with chrome taps over, built in cupboard housing boiler, chrome ladder style radiator and tiled walls and flooring.



EXTERIOR

The property offers a large lawned garden, patio and off road parking.



NOTE

We are advised it is septic tank drainage and oil fired central heating.

