



West Row, Boston PE21 8RA

£190 pw

Centrally located in Boston, this two-bedroom home offers easy access to shops, cinema, and public transport, making it perfect for those without a car. It features spacious living areas, a full kitchen, and a large bathroom.

01205356380
boston@plotway.co.uk

Plotway

Welcome to your new home in the vibrant heart of Boston!

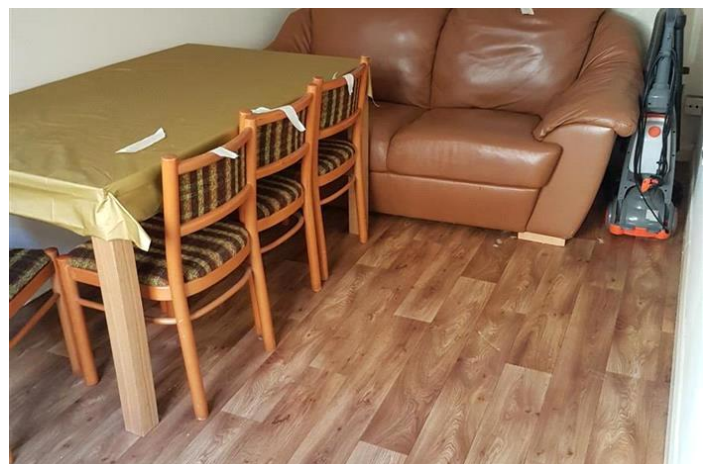
This charming two-bedroom residence is ideally situated for convenience and accessibility, perfect for city living. Just steps away, you'll find an array of shops, local entertainment including a cinema, and the central bus station, making it a breeze to navigate the city without a car.

As you step inside, you'll be greeted by a generously sized living room that offers ample space for relaxation and entertainment. The adjacent kitchen is well-appointed with modern amenities and sufficient storage, ready for you to whip up your favorite dishes. Each of the two bedrooms is designed with comfort in mind, providing a peaceful retreat after a busy day.

The large bathroom features modern fixtures and offers a spacious area for your morning routine. Whether you're a young professional, a small family, or someone looking for a conveniently located sanctuary in the city, this home ticks all the boxes.

Experience the blend of comfort and convenience in this delightful Boston home, ready for you to make it your own. Don't miss out on this incredible opportunity to live right in the center of everything Boston has to offer.

Contact us today to schedule a viewing and see for yourself why this should be your next home!





Energy Efficiency Rating		
	Current	Potential
Very energy efficient - lower running costs		
(92-100) A		
(81-91) B		
(69-80) C		72
(55-68) D		
(39-54) E	45	
(21-38) F		
(1-20) G		
Not energy efficient - higher running costs		
England & Wales	EU Directive 2002/91/EC	

The energy efficiency rating is a measure of the overall efficiency of a home. The higher the rating the more energy efficient the home is and the lower the fuel bills will be.

Whilst every effort is made to ensure the accuracy of these details, it should be noted that the measurements are approximate only. Floorplans are for representation purposes only and prepared according to the RICS Code of Measuring Practice by our floorplan provider. Therefore, the layout of doors, windows and rooms are approximate and should be regarded as such by any prospective tenant.